

MONTBELIARDE

SIRE DIRECTORY

SUMMER | FALL 2022



Coopex
MONTBELIARDE
THE MONTBELIARDE WORLDWIDE



From left to right :
 MILLENIUM daughter, LANCASTER daughter, LEGEND daughter,
 MILLENIUM daughter, MAYFLOWER daughter, LELABEL daughter,
 MEMPHIS daughter, JUOFOREZ daughter

SUMMARY

COOPEX MONTBELIARDE, YOUR MONTBELIARDE WORLDWIDE SUPPLIER.....	4
THE MONTBELIARDE BREED.....	6
PURE BREED / CROSSBREED.....	8
CROSSBREED WITH MONTBELIARDE.....	10
THE NEW MONTBELIARDE ISU.....	14
HOW TO READ THE CATALOG.....	16
FIND THE BULLS WHICH FIT YOU THE BEST.....	18
TOP BULLS.....	20



On cover: MARLEY daughter

ILANNE		21	PINKFLOYD		36
ILAX		21	PITTSBURGH		36
JEREMIAH		22	POLNAREFF		31
LOOPI		22	POMPILOP		37
MALIBU		22	POPECK		37
MALPUECH		23	PORTORICO		38
MARATHON		24	POSTIT		31
MARLEY		24	PUNTO		38
MARMADUC		24	RADCLIFFE		39
MEZENC		25	RAHAN		39
MILTON		23	RANGOON		40
MINNESOTA		25	RAZON		40
MORNING		25	RECORDMAN		41
NANISS		26	REDROCK		42
NEKFEU		26	REMIX		43
NEUTRINO		27	RIGOLETTO		44
NIRVANAVR		26	RINGOSTAR		43
NOELCERNEU		28	RINVADER		45
NYX		27	RISTRETTO		46
OCLIPSE		29	ROANNAIS		47
ODYNO		29	ROCTAVIO		48
OGIVE		30	RODELICE		48
OMALET		30	ROOFTOP		49
ONEMILLION		32	ROTTERDAM		50
OSS117		31	RUBIXCUBE		50
PACTOLE		33	RUDOLPH		46
PALADIO		34	RUSKY		51
PARRAIN		34	RUSSEY		46
PETERPAN		35	RUSTIC		51
PIAGGIO		35			

Available in sexed and conventional semen

Available in sexed semen only

Available in conventional semen only

COOPEX MONTBELIARDE

From French Breeders to foreign breeders

SEMEN

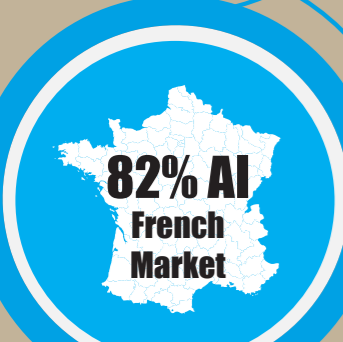
- > #1 Montbeliarde breeding program
- > #1 Montbeliarde sire: PACTOLE #1 ISU 189
- > 2 100 000 straws produced per year

LIVESTOCK

- > Worldwide leader for Montbeliarde supplying
- > 12 200 heifers exported per year
- > 40 years experience

TECHNICAL SUPPORT

We support our clients in the evolution of their projects. Genetics management (Mating advice, genotyping...), AI services, nutrition and feeding management, technical support issued by our experts on herd management.

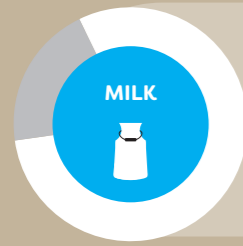


4

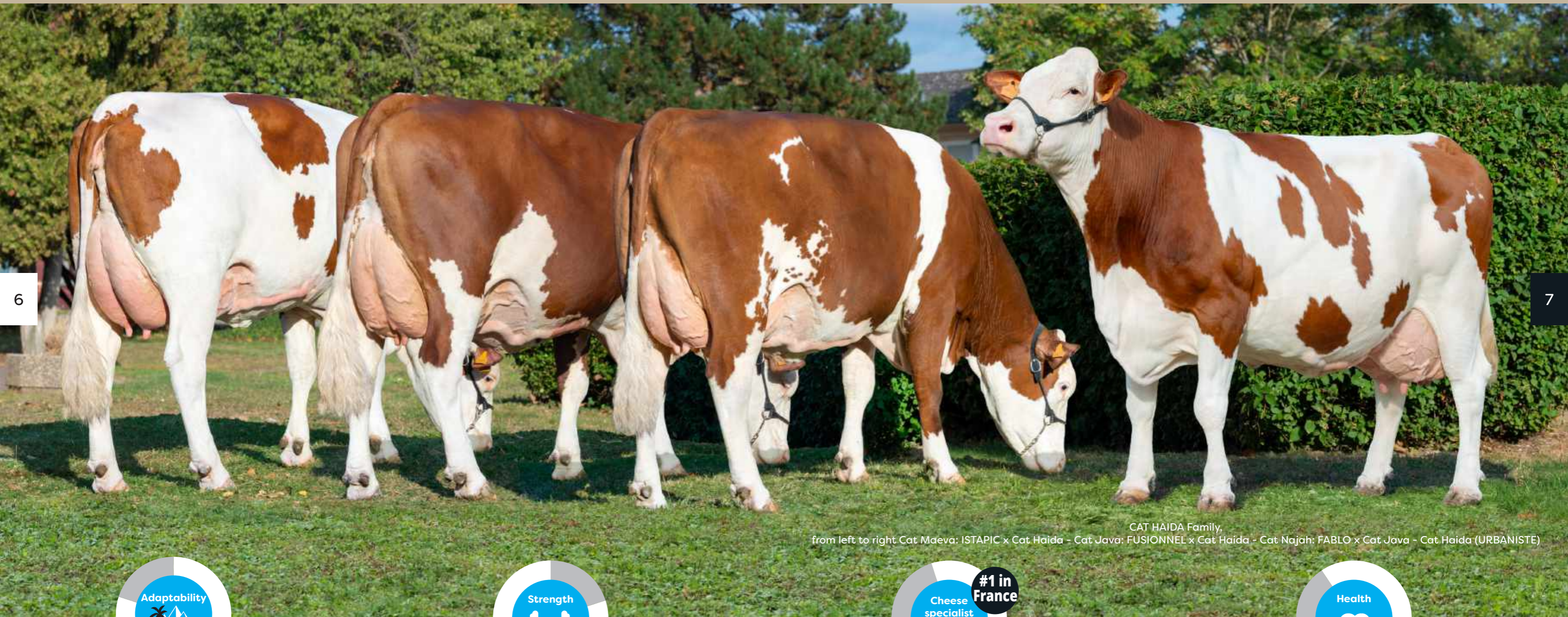
5



COOPEX MONTBELIARDE



8916kg, 3.5%P, 3.94%F | #2 dairy breed in France | 392 247 recorded cows



CAT HAIDA Family, from left to right Cat Maeva: ISTAPIC x Cat Haida - Cat Java: FUSIONNEL x Cat Haida - Cat Najah: FABLO x Cat Java - Cat Haida (URBANISTE)



Type suitable to :

- **HARD** breeding systems, native from mountain area with great ability for grazing - Strong feet & legs
- **EASY** breeding - systems **95% of easy calvings** without any assistance - **Good rump structure**
- **ECONOMIC** breeding systems - Leader for rough and dry forages intake and conversion into milk (dry hay / maize and grass silages)



Grazing

- **50%** of the montbeliardes are kept **in extensive systems in France**. Native from a pasture territory, the Montbeliarde breed has been selected on milk production, robustness, feet & legs, ability to convert coarse and dry fodder intake into milk.



Beef value

- High potential to fatten culled cows and young calves
- **400 kg** at 18 months (average carcass weight)
- **1350 g/day** (average daily gain)



#1 breed used for producing milk for AOP cheese in France

- Higher frequency of Casein **BB & A2A2**
- **Mastitis resistance**: only **5% of herds** have SCS problems in France
- **#1 breed** used for producing milk for AOP cheese in France



	Holstein	Montbeliarde	
LONGEVITY - cows in 5th lactation and more	10%	19%	
FERTILITY	Doses / pregnancy	2.4	1.7
	Calving Interval (days)	420	392
	AI with sexed semen (%)	14.7%	28.2%
	Non-return rate at 90 days on heifers with sexed semen	58.5%	62.5%

Save 25% of straws

MONTBELIARDE

Pure Breed

8



IRAN
Montbeliarde cattle performing well under high heat stress conditions



CAMEROON
Montbeliarde breed well adapted to tropical climate



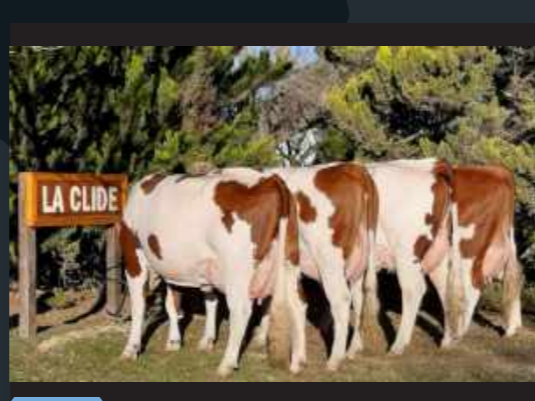
IRELAND
Montbeliarde herd in grazing system



Afghanistan
Pure Montbeliarde calf in Afghanistan



MONGOLIA
Montbeliarde performs well in the Mongolian steppes



ARGENTINA
Cabaña Montbeliarde - Tambo La Clide



ITALIA
400 Montbeliarde cows / 4 Milking Robots / prod : 10030 kg/cow @4.5%Fat & 3,6%Protein



COLOMBIA
Montbeliarde breed perfect for crossbreeding on Gyr cattle



JAPAN
First Montbeliarde crossbred heifers in Japan give excellent results



UK
Crossbreeding with Montbeliarde on Holstein to get more profitable cattle is very popular



ELASTAR DAUGHTER X HOLSTEIN
305 days 12806kg, 498kgF, 497kgP



NEW ZEALAND
Crossbred calves



ECUADOR
Montbeliarde breed suitable for tropical area



NETHERLANDS - Crossbred herd

Crossbred

9



Crossbreed with Montbeliarde ? It works and it is proven !

**EGYPT : +16% DAILY MILK YIELD
for MO x HO versus Hostein**

**USA : +19% DAILY PROFIT
for MO x HO versus Holstein**

Comparaison of the milk yield and reproductive performance of pure Holstein (HO) cows with those of their first generation (F1) crossbreds with Montbeliarde cows (MO) in four commercial dairy herds under Egyptian conditions (2012 - 2020).

The results of the study lead by the University of Minnesota show superior results of the crossbred cows versus the Holstein. The 10-year study is the most important scientific trial into crossbreeding dairy cattle yet undertaken. Led by Professor Les Hansen, its results were published in July 2019. The trial was conducted on 7 dairy herds in Minnesota & 3.550 Holstein were committed for the foundation. Crossbred MO x Ho cows are more profitable than their Holstein herdmates in a 10-year study with high-performance Minnesota dairy herds.

**MO x HO CROSSBRED COWS
SIGNIFICANTLY SUPERIOR TO PURE HO COWS**

	Holstein		Montbeliarde x Holstein
NUMBER OF COWS	531		536
DAILY MILK KG	25,9	+16%	30
305-DAY MILK YIELD KG	7987	+15%	9210
DAYS IN MILK KG	399	+17%	341
SERVICES PER IA	3,7	-42%	2,6
DAYS OPEN	190	-44%	132

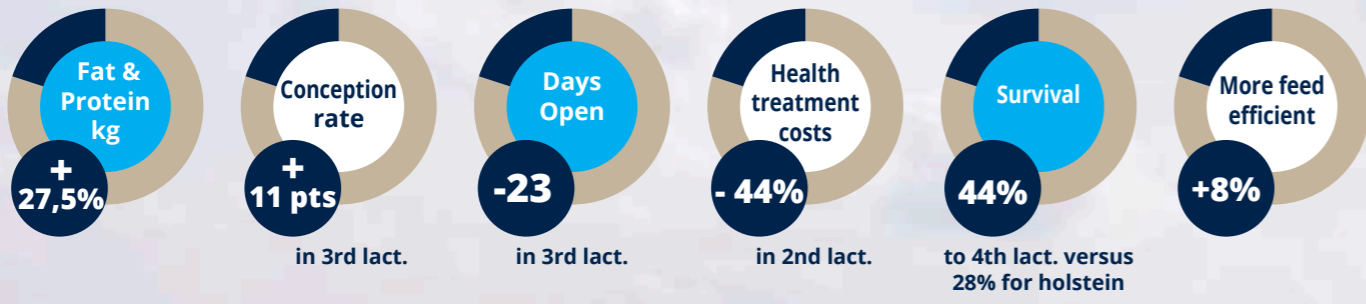
	Holstein		Montbeliarde x Holstein
COWS (number)	640		558
LIFETIME PROFIT	\$2 842		\$4 480 +58%
DAILY PROFIT	\$3,74		\$4,46 +19%
TOTAL INCOME	\$15,92		\$16,28 +2%
TOTAL EXPENSE	\$12,19		\$11,83 -3%

Under Egyptian subtropical conditions, the first generation of MO x HO crossbred cows exhibit better performance, compared to pure HO cows in milk yield and reproductive traits. These findings could provide an effective strategic option for the genetic improvement of dairy cattle in hot subtropical regions. Montbeliarde breed is more resistant to high heat stress and more productive than Holstein breed in such condition.

LIFETIME PROFIT AND DAILY PROFIT for MO x HO 2-breed crossbreds and their HO herdmates.

Source: Sadek RR, Abou-Bakr S, Nigm AA, Ibrahim MAM, Badr MM and Awad MAA (2021). Evaluation of Milk Yield and Reproductive Performance of Pure Holstein and Its F1 Crossbreds with Montbeliarde in Egypt. World Vet. J., 11 (3): 489-497. DOI: <https://dx.doi.org/10.54203/scil.2021.vwj63>

Source: University of Minnesota, July 2019 https://www.ansci.umn.edu/sites/ansci.umn.edu/files/procross_10-year_study_results_kg_new.pdf



MINNESOTA TRIAL



PRODUCTION

	Holstein	MO x HO
1 ST LACTATION	Cows (number)	1 180
	Fat + Protein (kg)	765
	Milk (kg)	11 378
2 ND LACTATION	Cows (number)	883
	Fat + Protein (kg)	887
	Milk (kg)	13 338
3 RD LACTATION	Cows (number)	451
	Fat + Protein (kg)	927
	Milk (kg)	13 932
LIFETIME	Cows (number)	640
	Days in the herd	886
	Fat + Protein (kg)	2 201

FERTILITY

	Holstein		MO x HO	
	Cows (n)	Average	Cows (n)	Average
2 ND LACT.	Conception rate 1st AI	822 29%	409 40%	+11 points
	Days open	704 139 days	387 117 days	-22 days
3 RD LACT.	Conception rate 1st AI	389 30%	253 41%	+11 points
	Days open	336 143 days	245 120 days	-23 days

TOTAL HEALTH TREATMENT

	Holstein		MO x HO	
	Cows (n)	Average	Cows (n)	Average
First Lact.	1 280	\$43	592	\$31
Second Lact.	1 007	\$68	471	\$47
Third Lact.	577	\$92	334	\$67

SURVIVAL

	Holstein		MO x HO	
	Cows (n)	Average	Cows (n)	Average
Survival to 3 rd calving	1 201	51%	551	62%
Survival to 4 th calving	1 012	28%	516	44%

Source: University of Minnesota, July 2019
https://www.ansci.umn.edu/sites/ansci.umn.edu/files/procross_10-year_study_results_kg_new.pdf

+ 8% More Feed Efficient

	Holstein	MO x HO
Fat + Protein Production (kg)	441	445
Dry Matter Intake (kg)	3 592	3 360
Fat+Protein/DMI	0,12	0,13
Body Weight (kg)	644	636
Wither Height (cm)	143,7	140,2
Body Condition Score	3,06	3,25
Milk (kg)	6 636	6 264

Study by B. N. Shonka-Martin, A. R. Hazel, B. J. Heins, L. B. Hansen, Department of Animal Science, University of Minnesota, USA, SEPT 2018
 Averages for days 4 to 150 of lactation

CALIFORNIA TRIAL



MORE LIFETIME PROFIT

	HO	MO x HO
Lifetime milk (kg)	28 086	32 891
Lifetime Solids (kg)	1 867	2 267
Days open	148	122
SCS	3,27	2,98
Survival to 4th calving (%)	29	55
Lifetime profit (\$)	4 347	6 503
Profit per day (\$) per cow	4,17	4,39

Main results for Montbeliarde x Holstein crossbred cows in comparison to pure Holstein cows. Journal of Dairy Science Vol. 95, n°2. - Feb. 2012



DANISH STUDY

Mo x Ho more productive than Fleckvieh x Ho

		600 Mo x Ho cows	2500 Fleckv. x Ho cows
1 ST LACT.	Milk production, 1st lactation (kg)	+106	-343
	Solids production, 1st lactation (kg)	+15	-11
2 ND LACT.	Milk production, 2nd lactation (kg)	-4	-625
	Solids production, 2nd lactation (kg)	+3	-27
3 RD LACT.	Milk production, 3rd lactation (kg)	+16	-737
	Solids production, 3rd lactation (kg)	+7	-34
SURVIVAL	Survival to 2nd lactation (%)	+6,5	+2,5
	Survival to 3rd lactation (%)	+14,0	+9,8
	Survival to 4th lactation (%)	+8,7	+9,9

Source: Study made in Denmark by Torben Nørremark, VikingDanmark, Anders Fogh, SEGES and Lydia H. Lauridsen, AU, April 2016



Austria
 Montbeliarde (Hummer daughter) x Fleckvieh got the Top Price at Maishofen Auction Sales



Romania
 Montbeliarde breed more and more popular for crossbreeding on Fleckvieh



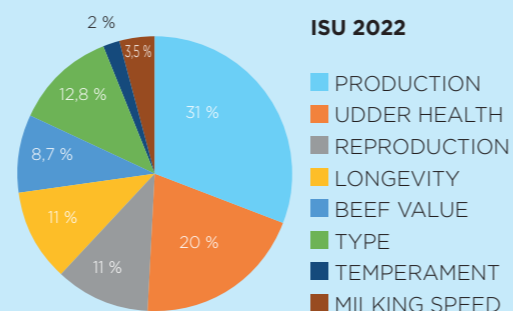
Austria
 Montbeliarde (HALLEZ daughter) x Fleckvieh

Revision of the Montbeliarde ISU

The last ISU revision was in 2012. A reform of a breed proof was necessary for the selection objectives to correspond to the economic conditions of the Montbeliarde herds, the genetic progress of the breed, and to integrate new available traits.

Major changes in the new ISU

- > Affirms body capacity and beef value of the Montbeliarde breed
- > Gives more weight to functional traits: longevity and udder health
- > Rebalances the fat & protein % in the production category
- > Integrates selection for improved temperament



PRODUCTION

For production, the former INEL changes its name to **DAIRY SYNTHESIS**. The composition changes with more importance given to fat production.

$$\text{DAIRY SYNTHESIS} = 0.76 \times (\text{Pkg} + 0.51 \text{ Fkg} + 0.15\text{F}\% + 0.52\text{P}\%)$$

TYPE

The emphasis placed on various conformation traits has changed. A noticeable change is the new breeding value for body capacity which combines Body & Rump. Furthermore, the new trait, «rear teat placement» has been added to the udder breeding value.

> BODY

The body capacity breeding value combines the former Body & Rump breeding values.
Body = 30% CHEST WIDTH + 20% CHEST DEPTH + 25% THURL WIDTH + 25% RUMP LENGTH
 The traits **BODY DEPTH** & **RUMP WIDTH** are no longer assessed because they are strongly related to **CHEST DEPTH** & **THURL WIDTH**.
 The traits **STATURE** & **RUMP ANGLE** are still evaluated but are not included in the Body Capacity breeding value.

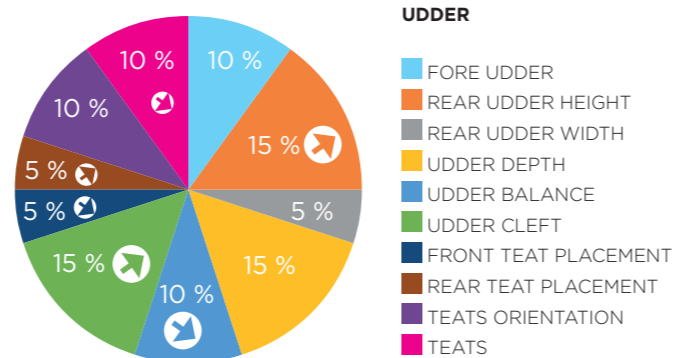
> FEET & LEGS

HOCK THICKNESS is no longer assessed.

> UDDER

The new trait **REAR TEAT PLACEMENT** now has a 5% emphasis in the UDDER breeding value. Values higher than 100 indicate wider spacing of the rear teats. On the contrary, values under 100 indicate closer spacing.

REAR UDDER HEIGHT and **UDDER CLEFT** are given more weight in the UDDER breeding value. **UDDER BALANCE**, **FRONT TEAT PLACEMENT** and the **TEATS** are given less weight.



NEW CALVING EASE SCORES

- > Beginning of Single Step method > Values are more spread on a bigger scale
- > The mode of expression in % of births with easy calvings on heifers has been kept

Calving Ease Meaning	CE Score with New Method	CE Score with Old Method
Very Difficult	From 48 to 50	Below 84
Difficult	From 51 to 77	From 85 to 86
Average / Normal	From 78 to 88	From 87 to 88/ Normal
Easy	From 89 to 94	From 89 to 90
Very Easy	From 95	From 91 and above

How to pick a bull

- > **To use on HEIFERS**
 - for Pure Breeding : SELECT a bull with Calving Ease score from 89 and above
 - However for Crossbreeding , SELECT a bull with Calving Ease score from 90 and above
- > **To use on COWS**
 - For Pure Breeding : SELECT a bull with Calving Ease score from 78 avec above
 - However for Crossbreeding , SELECT a bull with Calving Ease score from 89 and above

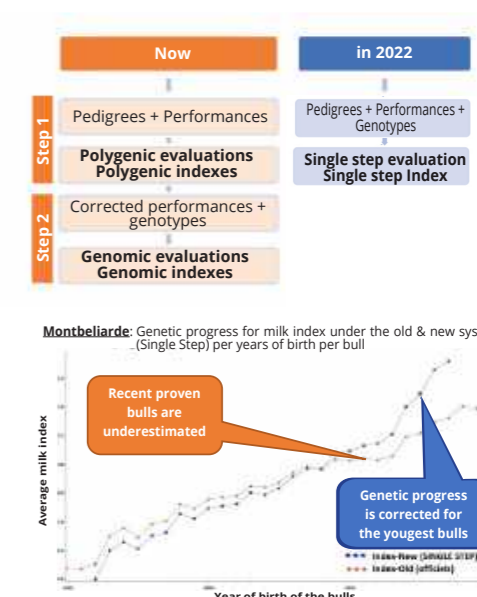
New genetic calculation method: the SINGLE STEP

Starting with the April 2022 proofs, a new calculation method called SINGLE STEP is used. It has been implemented broadly by all our partners: IDELE, GENEVAL, ALLICE and INRAE within the UNIGENO project and is used in the genetic estimation of all French breeds using genomic information. This method is also used internationally.

Why a new indexing method?

For several years, the percentage of genotyped animals have increased. Thanks to this tool, animals with poor performance predictions are culled before they go into production, both males and females. Thus, only the best animals are given an opportunity to contribute performance data, which leads to an **overestimation of the reference population** (those animals with genomic testing + performance information) and an **underestimation of the indexed animals** (the whole population): this concept is called **pre-selection bias**.

The objective of the single step method is to correct this pre-selection bias by considering all the information available for all animals simultaneously, whether they enter production or not. With the single step, noticeable information increases, particularly in the evaluations of young animals, now corrected for the pre-selection bias.



SINGLE STEP, what are the main evolutions?

- > Change from two steps to one: single step means all pedigree, performance, and genotype data are evaluated simultaneously
- > All genotypes are considered in the reference population
- > A method that now fairly compares genotyped and non-genotyped animals
- > Correction of the pre-selection bias

HOW TO READ THE CATALOG

All these Montbeliarde bulls have been approved by the French Ministry of Agriculture. All the proofs are officially processed by the INRA (French Agronomic Research and published by the French Breeding Institute. The proofs of this catalog are the June 2022 run.

PEDIGREE / IDENTIFICATION

SIRE / MGS / MGGS
National number, breeder

ILANNE

BRINK | CARTER | PERNAN - FR 0113019487 - aAa 435216

ISU
147

PRODUCTION

Dairy Synthesis **+32**

MILK	P kg	F kg	P%	F%	From'MIR	digeR
+647	+25	+34	+0,05	+0,11	+0,3	+0,1

K-Cas AB B-Cas A1A2 Daughters 901 Rel. 95%

FUNCTIONAL

MTC | MIF | MTRF

UDDER HEALTH	FERTILITY	PRODUCTIVE LIFE
0,5	0,8	1,8

MILKING SPEED 109 TEMPERAMENT 133

CALVING EASE 95

with conventional semen 95
with sexed semen 95

TYPE

Daughters 533 | Rel. 93% | **114**

TRAIT	SCORE	CLASSIFICATION
BODY CAPACITY	103	POOR
CHEST WIDTH	99	AVERAGE
CHEST DEPTH	105	WIDE
THURL WIDTH	106	WIDE
RUMP LENGTH	103	SHORT
RUMP ANGLE	102	SHORT
STATURE	110	TALL
FEET & LEGS	114	POOR
REAR LEG SET	93	STRONG
FOOT ANGLE	104	LOW
REAR LEGS REAR VIEW	90	AVERAGE
UDDER	115	POOR
FORE UDDER LENGTH	118	LOOSE
REAR UDDER HEIGHT	95	LOW
REAR UDDER WIDTH	122	NARROW
UDDER DEPTH	118	DEEP
UDDER BALANCE	95	MORE REAR
UDDER CLEFT	101	WEAK
FRONT TEAT PLACEMENT	118	WIDE
TEAT	103	POOR
TEAT LENGTH	99	LONG
BEEF VALUE	93	POOR
BEEF ABILITIES for fattening bulls	-0,1	POOR

Majeste, ILANNE daughter

Pictures : Giorgio Soldi & Guillaume Moy

HOW TO READ THE CATALOG

TYPE

BODY CAPACITY

= 30% CHEST WIDTH
+ 20% CHEST DEPTH
+ 25% THURL WIDTH
+ 25% RUMP LENGTH

FEET & LEGS

Rear leg set

64 100 136

Foot angle

64 100 136

Rear legs rear view

64 100 136

UDDER

Fore udder length

64 100 136

Rear udder height

64 100 136

Rear udder width

64 100 136

Udder balance

64 100 136

Udder depth

64 100 136

Udder cleft

64 100 136

Front teat placement

64 100 136

Teat length

64 100 136

BEEF VALUE

Beef abilities for fattening bulls	-1	+1
	Poor	Excellent

PRODUCTION

Dairy synthesis = $0.76 \times (Pkg + 0.51 Fkg + 0.15F\% + 0.52P\%)$ Milk : milk yield in kg
 Protein (Kg) = true protein yield (in kg.) Fat (Kg) = fat yield (in kg.) Protein (%) = true protein content (in %) Fat (%) = fat content (in %)
 digeR : feed efficiency index
 From'MIR : cheese ability index
 Kappa casein (AA/AB/BB) Beta casein (A1A1/A1A2/A2A2)

FUNCTIONAL TRAITS

UDDER HEALTH		FERTILITY	
69% SCS + 31% CL. MA		46% FERc + 28% FERh + 26% IC-1AI	
SCS Somatic Cell Score	CL. MA Clinical Mastitis Resistance	FERc / FERh Fertility Cows / Fertility Heifers	IC-1AI Interval calving 1st AI
Average 0 Standard Dev. ±1 > 0 means less Somatic Cells	Average 0 Standard Dev. ±1 > 0 means less mastitis	Average 0 Standard Dev. ±1 > 0 means more fertile daughters	Average 0 Standard Dev. ±1 > 0 means earlier cyclicity reproductive after calving
PL	MS	TEM	
Productive Life	Milking Speed	Temperament	
Average 0 Standard Dev. ±1 > 0 means more functional longevity	Average 100 Standard Dev. ±12 > 100 means daughters milk quicker	Average 100 Standard Dev. ±12 > 100 means daughters easier to handle	
CE			
Calving Ease			
% of easy calvings (no assistance)		From 48 to 50	Very Difficult
		From 51 to 77	Difficult
		From 78 to 88	Average / Normal
		From 89 to 94	Easy
		From 95	Very Easy

FIND THE BULLS WHICH SUIT YOU BEST

All bulls available on www.coopex.com

TOP 3 ISU

TOP 3 ISU GENOMIC



- #1 PACTOLE ISU 189
- #2 ROANNAIS ISU 187
- #3 RECORDMAN ISU 186

TOP 3 ISU PROVEN



- #1 MILTON ISU 173 with 2571 daughters
- #2 MALAVITA ISU 162 with 443 daughters
- #3 NOELCERNEU ISU 160 with 257 daughters

GRAZING

MEDIUM SIZE COW / AVERAGE STATURE / STRONG FEET & LEGS
GOOD LOCOMOTION / GREAT GRAZING CONVERTER



NOELCERNEU
130 Type / 140 Udder / 109 F&L

OGIVE
128 Type / 136 Udder / 112 F&L

RUSTIC
126 Type / 139 Udder / 109 F&L

PRODUCTION

HIGH MILK VOLUME / TOP YIELD BULLS



RODELICE
Milk +1743 kg

MALIBU
Milk +1235 kg - 598 daughters

PARRAIN
Milk +1733 kg

HEALTH

LEADER FOR FITNESS TRAITS
LOW SCC / STRONG UDDER HEALTH / HIGH FERTILITY
EXCELLENT LONGEVITY / EASY CALVING



ROANNAIS
+2,7 Productive Life / +2,0 Fertility / +1,4 Udder Health

MILTON
+2,4 Fertility / +2,2 Productive Life / +2,1 Udder Health

PACTOLE
+2,0 Udder Health / +1,6 Fertility / +1,5 Productive Life

SOLIDS

HIGH FAT% & PROTEIN %
CHEESE SPECIALIST / BB KAPPACASEIN / FROM'MIR



NEUTRINO
+0.46% Protein & +0.49% Fat

ONEMILLION
+0.20% Prot. & +0.46% Fat

ROOFTOP
+0.24% Prot. & +0.37% Fat

POWERFULL

STRENGTH SPECIALIST / CHEST WIDTH IMPROVER
HIGH BEEF VALUE / GREAT BODY CAPACITY



MALPUECH
Body capacity 119 / Type 125 / Beef value 109

PITTSBURGH
Type 128 / Body capacity 117

REDROCK
Type 131 / Beef value 121

COOPEX BRINGS YOU THE BEST TOP 5

MONTBELIARDE OFFER SUMMER 2022

TYPE

RUBIXCUBE	140
PIAGGIO	136
ROOFTOP	134
RUSSEY	134
ROTTERDAM	132

FEET & LEGS

JEREMIAH	132
RIGOLETTO	127
RAZON	126
MILTON	126
RUDOLPH	125

UDDER

PIAGGIO	147
RUBIXCUBE	145
NOELCERNEU	140
ROOFTOP	140
RUSTIC	139

UDDER HEALTH

OCLIPSE	2,9
MILTON	2,1
PACTOLE	2
OGIVE	1,8
PUNTO	1,8

REPRODUCTION

PORTORICO	2,8
MILTON	2,4
PINKFLOYD	2,4
OGIVE	2,3
MARATHON	2,2

PRODUCTIVE LIFE

OGIVE	3
MINNESOTA	2,9
ROANNAIS	2,7
RINVADER	2,5
PIAGGIO	2,4

MILK kg

REMIX	1947
ROTTERDAM	1916
RIGOLETTO	1794
RODELICE	1743
PARRAIN	1733

PROTEIN %

NEUTRINO	0,46
PETERPAN	0,38
RINGOSTAR	0,3
RANGOON	0,3
POMPILOP	0,27

FAT %

NEUTRINO	0,49
PUNTO	0,49
ONEMILLION	0,46
PETERPAN	0,44
RUSSEY	0,4

SEXED SEMEN AVAILABLE

ISU	ISU	ISU	ISU
HELUX 136	ODYNO 164	RADCLIFFE 171	ROANNAIS 187
ILANNE 147	OGIVE 177	RAFIKI 159	ROBSTARK 182
ILAX 148	OMALET 173	RAHAN 165	ROCTAVIO 180
JEREMIAH 142	ONEMILLION 173	RANGOON 164	RODELICE 178
MALPUECH 158	PACTOLE 189	RECORDMAN 186	ROOFTOP 185
MARLEY 156	PARRAIN 173	REDROCK 184	ROTTERDAM 180
MARMADUC 147	PETERPAN 169	REMIX 179	RUBIXCUBE 170
MILTON 173	PIAGGIO 165	RIGOLETTO 186	RUDOLPH 172
NEUTRINO 152	PITTSBURGH 168	RINGOSTAR 184	RUSKY 181
NIRVANAVR 140	POMPILOP 161	RINVADER 175	RUSSEY 172
NOELCERNEU 160	POPECK 182	RISTRETTO 177	RUSTIC 175

Available in sexed and conventional semen Available in sexed semen only Available in conventional semen only

ILANNE

BRINK | CARTER | PERNAN - FR 0113019487 - aAa 435216



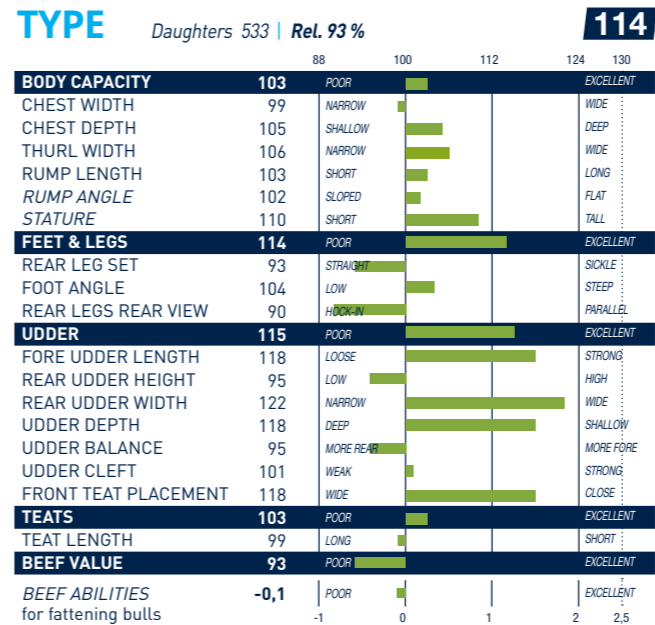
ISU
147

PRODUCTION

Dairy Synthesis +32

MILK	P kg	F kg	P%	F%	From'MIR	digeR
+647	+25	+34	+0,05	+0,11	+0,3	+0,1

K-Cas AB B-Cas A1A2 Daughters 901 Rel. 95%



FUNCTIONAL

MTC | MIF | MTRF

UDDER HEALTH	0,5	NON IMPROVER	IMPROVER
FERTILITY	0,8	NON IMPROVER	IMPROVER
PRODUCTIVE LIFE	1,8	NON IMPROVER	IMPROVER

MILKING SPEED: 109 (SLOW to FAST)
TEMPERAMENT: 133 (LIVELY to QUIET)
CALVING EASE: 95 (NORMAL to EASY CALVING)

with conventional semen: 95
with sexed semen: 95
Easy calving



Majeste, ILANNE daughter

ILAX

GOLDONI | TRIOMPHE | PLUMITIF - FR 0113027655 - aAa 432561



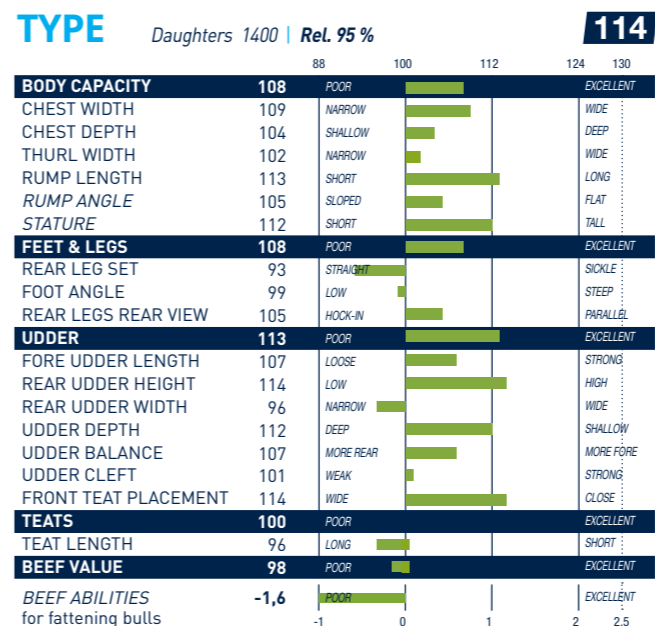
ISU
148

PRODUCTION

Dairy Synthesis +43

MILK	P kg	F kg	P%	F%	From'MIR	digeR
+807	+35	+37	+0,12	+0,08	+0,3	0

K-Cas AB B-Cas A1A2 Daughters 2344 Rel. 95%



FUNCTIONAL

MTC | MIF | MTRF

UDDER HEALTH	1,1	NON IMPROVER	IMPROVER
FERTILITY	-0,4	NON IMPROVER	IMPROVER
PRODUCTIVE LIFE	1,1	NON IMPROVER	IMPROVER

MILKING SPEED: 110 (SLOW to FAST)
TEMPERAMENT: 123 (LIVELY to QUIET)
CALVING EASE: 95 (NORMAL to EASY CALVING)

with conventional semen: 95
with sexed semen: 95
Easy calving



Odyssee, ILAX daughter

HEALTH

GRAZING

21

SOLIDS

GRAZING

JEREMIAH

HYPER | ELASTAR | SIR - FR 4974877914 - aAa 543162



Miroué, JEREMIAH daughter

CONVENTIONAL HEIFERS ROBOT CROSSBREEDING ISU 142

PRODUCTION Dairy Synthesis +38

MILK	P kg	F kg	P%	F%	From'MIR	digeR	K-Cas	B-Cas
+664	+29	+40	+0,1	+0,19	+1	+0,5	AB	A1A2

Daughters 2281 Rel. 95%

FUNCTIONAL MTF | MIF | NC

M Speed	TEM	Calv. Ease
107	124	95

Easy calving

UDDER HEALTH	FERTILITY	PRODUCTIVE LIFE
-0,4	0,9	0,7

TYPE Daughters 835 | Rel. 95% **122**

BODY CAPACITY	STATURE	FEET & LEGS	UDDER	TEATS	BEEF VALUE	BEEF ABILITIES
92	100	132	124	92	98	-0,3

BEEF ABILITIES for fattening bulls

CONVENTIONAL HEIFERS ROBOT CROSSBREEDING ISU 150

PRODUCTION Dairy Synthesis +40

MILK	P kg	F kg	P%	F%	From'MIR	digeR	K-Cas	B-Cas
+787	+30	+45	+0,05	+0,19	+0,2	0	AB	A1A2

Daughters 278 Rel. 95%

FUNCTIONAL MTC | MIF | NC

M Speed	TEM	Calv. Ease
100	119	95

Easy calving

UDDER HEALTH	FERTILITY	PRODUCTIVE LIFE
1,3	0,5	0,5

TYPE Daughters 128 | Rel. 82% **104**

BODY CAPACITY	STATURE	FEET & LEGS	UDDER	TEATS	BEEF VALUE	BEEF ABILITIES
100	92	89	112	112	108	0,4

BEEF ABILITIES for fattening bulls

CONVENTIONAL HEIFERS ROBOT CROSSBREEDING ISU 156

PRODUCTION Dairy Synthesis +46

MILK	P kg	F kg	P%	F%	From'MIR	digeR	K-Cas	B-Cas
+1235	+38	+46	-0,03	-0,04	-0,7	+0,1	AB	A1A2

Daughters 598 Rel. 95%

FUNCTIONAL MTC | MIF | NC

M Speed	TEM	Calv. Ease
99	109	95

Easy calving

UDDER HEALTH	FERTILITY	PRODUCTIVE LIFE
1,8	0,2	1,5

TYPE Daughters 247 | Rel. 88% **112**

BODY CAPACITY	STATURE	FEET & LEGS	UDDER	TEATS	BEEF VALUE	BEEF ABILITIES
97	100	119	120	101	65	-0,3

BEEF ABILITIES for fattening bulls

LOOPI

BRINK | CRASAT | PERNAN - FR 2534591940 - aAa 531462



Orange (LOOPI), RINGOSTAR Dam

MALIBU

ILLIAM | CORTIL | RALBAN - FR 3803349157 - aAa 534162



Odace, MALIBU daughter

MALPUECH

JILBEER | GINASTERA | VERCEL - FR 4635470118 - aAa 423651

CONVENTIONAL HEIFERS

ISU 158

PRODUCTION Dairy Synthesis +54

MILK	P kg	F kg	P%	F%	From'MIR	digeR
+1010	+42	+55	+0,12	+0,2	+0,5	-0,3

K-Cas BB B-Cas A2A2 Daughters 418 Rel. 95%

TYPE Daughters 242 | Rel. 88% **126**

BODY CAPACITY	FEET & LEGS	UDDER	TEATS	BEEF VALUE	BEEF ABILITIES
119	115	117	98	109	0,6

BEEF ABILITIES for fattening bulls

FUNCTIONAL MTF | MIF | NC

UDDER HEALTH	FERTILITY	PRODUCTIVE LIFE
0,4	0	0,9

MILKING SPEED 96 TEMPERAMENT 93 CALVING EASE 95

with conventional semen 95 with sexed semen 95

Easy calving



Polynesie, MALPUECH daughter

MILTON

INGENIO | BRINK | UGOSTAR - FR 0116003935 - aAa 561423

CONVENTIONAL HEIFERS

ISU 173

PRODUCTION Dairy Synthesis +31

MILK	P kg	F kg	P%	F%	From'MIR	digeR
+328	+22	+32	+0,17	+0,27	+0,3	+1

K-Cas AB B-Cas A1A2 Daughters 2571 Rel. 95%

TYPE Daughters 1448 | Rel. 95% **126**

BODY CAPACITY	FEET & LEGS	UDDER	TEATS	BEEF VALUE	BEEF ABILITIES
105	126	122	111	108	0,5

BEEF ABILITIES for fattening bulls

FUNCTIONAL MTF | MIF | NC

UDDER HEALTH	FERTILITY	PRODUCTIVE LIFE
2,1	2,4	2,2

MILKING SPEED 105 TEMPERAMENT 86 CALVING EASE 95

with conventional semen 95 with sexed semen 95

Easy calving



Oeillette, MILTON daughter

SOLIDS

GRAZING

HEALTH

SOLIDS

POWERFULL

23

HEALTH

GRAZING

PRODUCTION

SOLIDS

MARATHON

IRKHAN | BRINK | SIR - FR 4316189962 - aAa 456312



Indérme (BRINK), MARATHON Dam

ISU 146

PRODUCTION Dairy Synthesis **+41**

MILK	P kg	F kg	P%	F%	From'MIR	digeR	K-Cas	B-Cas
+842	+30	+52	+0,03	+0,24	+1,9	-1,7	BB	A2A2

Daughters 249 Rel. 95%

FUNCTIONAL MTF | MIF | NC

M Speed	TEM	Calv. Ease
113	134	95

Easy calving

UDDER HEALTH	FERTILITY	PRODUCTIVE LIFE
-0,7	2,2	1,6

TYPE Daughters 125 | Rel. 82% **105**

BODY CAPACITY	STATURE	FEET & LEGS	UDDER	TEATS	BEEF VALUE	BEEF ABILITIES
92	106	110	113	106	87	0,4

BEEF ABILITIES for fattening bulls

MEZENC

IRKHAN | FALL | UDIL - FR 4316186377 - aAa 234165



Piplette, MEZENC daughter

ISU 155

PRODUCTION Dairy Synthesis **+50**

MILK	P kg	F kg	P%	F%	From'MIR	digeR	K-Cas	B-Cas
+1119	+41	+48	+0,06	+0,06	+0,3	-0,1	BB	A2A2

Daughters 298 Rel. 95%

FUNCTIONAL MTF | MIF | NC

M Speed	TEM	Calv. Ease
102	111	95

Easy calving

UDDER HEALTH	FERTILITY	PRODUCTIVE LIFE
1,4	0,4	1

TYPE Daughters 145 | Rel. 83% **110**

BODY CAPACITY	STATURE	FEET & LEGS	UDDER	TEATS	BEEF VALUE	BEEF ABILITIES
104	103	104	115	110	90	-1,2

BEEF ABILITIES for fattening bulls

MARLEY

JETLAG | GIOVANNI | UROCHER - FR 2549603124 - aAa 516324



Pasta, MARLEY daughter

ISU 156

PRODUCTION Dairy Synthesis **+38**

MILK	P kg	F kg	P%	F%	From'MIR	digeR	K-Cas	B-Cas
+684	+31	+30	+0,13	+0,04	+0,9	-2,3	BB	A2A2

Daughters 476 Rel. 95%

FUNCTIONAL MTF | MIF | NC

M Speed	TEM	Calv. Ease
98	122	95

Easy calving

UDDER HEALTH	FERTILITY	PRODUCTIVE LIFE
1,4	0,6	1,1

TYPE Daughters 232 | Rel. 87% **115**

BODY CAPACITY	STATURE	FEET & LEGS	UDDER	TEATS	BEEF VALUE	BEEF ABILITIES
104	119	111	110	105	117	0,2

BEEF ABILITIES for fattening bulls

MINNESOTA

IRKHAN | ENZO ROCS | URBANISTE - FR 8843770629 - aAa 315246



Olive, MINNESOTA daughter

ISU 148

PRODUCTION Dairy Synthesis **+33**

MILK	P kg	F kg	P%	F%	From'MIR	digeR	K-Cas	B-Cas
+1118	+32	+21	-0,05	-0,31	-1,3	-1,3	BB	A1A2

Daughters 1389 Rel. 95%

FUNCTIONAL MTF | MIF | NC

M Speed	TEM	Calv. Ease
107	117	95

Easy calving

UDDER HEALTH	FERTILITY	PRODUCTIVE LIFE
0,6	1,3	2,9

TYPE Daughters 681 | Rel. 94% **111**

BODY CAPACITY	STATURE	FEET & LEGS	UDDER	TEATS	BEEF VALUE	BEEF ABILITIES
108	107	101	114	106	95	-2,2

BEEF ABILITIES for fattening bulls

MARMADUC

JIBICE | CORTIL | CAIMAN - FR 2525813768 - aAa 546312



Phacéda, MARMADUC daughter

ISU 147

PRODUCTION Dairy Synthesis **+49**

MILK	P kg	F kg	P%	F%	From'MIR	digeR	K-Cas	B-Cas
+1010	+39	+48	+0,08	+0,11	+0,8	-1,9	BB	A2A2

Daughters 442 Rel. 95%

FUNCTIONAL MTF | MIF | NC

M Speed	TEM	Calv. Ease
111	114	95

Easy calving

UDDER HEALTH	FERTILITY	PRODUCTIVE LIFE
0,7	-0,1	0,5

TYPE Daughters 242 | Rel. 88% **114**

BODY CAPACITY	STATURE	FEET & LEGS	UDDER	TEATS	BEEF VALUE	BEEF ABILITIES
96	107	109	126	106	86	-1

BEEF ABILITIES for fattening bulls

MORNING

FABLO | CRASAT | OXALIN - FR 7024256591 - aAa 534126



Pinkylr, MORNING daughter

ISU 146

PRODUCTION Dairy Synthesis **+44**

MILK	P kg	F kg	P%	F%	From'MIR	digeR	K-Cas	B-Cas
+864	+34	+45	+0,07	+0,15	+0,7	-1,2	BB	A2A2

Daughters 402 Rel. 95%

FUNCTIONAL MTF | MIF | NC

M Speed	TEM	Calv. Ease
134	100	95

Easy calving

UDDER HEALTH	FERTILITY	PRODUCTIVE LIFE
-0,6	0,4	1,6

TYPE Daughters 161 | Rel. 83% **115**

BODY CAPACITY	STATURE	FEET & LEGS	UDDER	TEATS	BEEF VALUE	BEEF ABILITIES
103	103	107	122	112	91	0,7

BEEF ABILITIES for fattening bulls

NANISS

JARNAL | HELUX | UNIMAC - FR 0118008754 - aAa 513642



Loterie (HELUX) NANISS Dam

CONVENTIONAL HELIX CROSSBREEDING ISU **161**

PRODUCTION Dairy Synthesis **+57**

MILK	P kg	F kg	P%	F%	From'MIR	digeR	K-Cas	B-Cas
+1120	+44	+59	+0,15	+0,21	+0,4	+0,4	BB	A2A2

Daughters 0 Rel. 74%

FUNCTIONAL MTF | MIF | NC

M Speed	TEM	Calv. Ease
99	119	95

Easy calving

UDDER HEALTH	1,5
FERTILITY	-0,7
PRODUCTIVE LIFE	0,8

TYPE Daughters 1 | Rel. 59% **105**

BODY CAPACITY	101
STATURE	104
FEET & LEGS	98
UDDER	104
TEATS	114
BEEF VALUE	119
BEEF ABILITIES	0,7

BEEF ABILITIES for fattening bulls

NEKFEU

JOMBRIBJ | GIOVANNI | ULEMO - FR 2523746911 - aAa 135246



Peptine (NEKFEU) daughter

CONVENTIONAL HELIX CROSSBREEDING ISU **144**

PRODUCTION Dairy Synthesis **+40**

MILK	P kg	F kg	P%	F%	From'MIR	digeR	K-Cas	B-Cas
+914	+32	+40	+0,06	+0,05	+0,4	-0,1	AB	A1A2

Daughters 234 Rel. 95%

FUNCTIONAL MTF | MIF | NC

M Speed	TEM	Calv. Ease
116	93	95

Easy calving

UDDER HEALTH	-0,4
FERTILITY	0,9
PRODUCTIVE LIFE	1,2

TYPE Daughters 156 | Rel. 84% **117**

BODY CAPACITY	107
STATURE	119
FEET & LEGS	109
UDDER	118
TEATS	104
BEEF VALUE	100
BEEF ABILITIES	0,3

BEEF ABILITIES for fattening bulls

NIRVANAVR

FADIL | CARGO | RALBAN - FR 7040355837 - aAa 462531



Pouchère (NIRVANAVR) daughter

CONVENTIONAL HELIX ROBOT CROSSBREEDING ISU **140**

PRODUCTION Dairy Synthesis **+51**

MILK	P kg	F kg	P%	F%	From'MIR	digeR	K-Cas	B-Cas
+939	+40	+48	+0,13	+0,13	+0,5	+1,5	AA	A1A2

Daughters 62 Rel. 87%

FUNCTIONAL MTF | MIF | NC

M Speed	TEM	Calv. Ease
107	113	95

Easy calving

UDDER HEALTH	0,4
FERTILITY	-0,1
PRODUCTIVE LIFE	0,9

TYPE Daughters 48 | Rel. 73% **109**

BODY CAPACITY	84
STATURE	100
FEET & LEGS	115
UDDER	128
TEATS	102
BEEF VALUE	69
BEEF ABILITIES	-1,7

BEEF ABILITIES for fattening bulls

NEUTRINO

JILBEER | FADIL | ROBIN - FR 3803364134 - aAa 513462

CONVENTIONAL HELIX ROBOT CROSSBREEDING ISU **152**

PRODUCTION Dairy Synthesis **+72**

MILK	P kg	F kg	P%	F%	From'MIR	digeR
+631	+54	+63	+0,46	+0,49	+3	+1

K-Cas **BB** B-Cas **A2A2** Daughters 44 Rel. 86%

TYPE Daughters 32 | Rel. 71% **110**

BODY CAPACITY	104
FEET & LEGS	109
UDDER	106
TEATS	93
BEEF VALUE	109
BEEF ABILITIES	-0,9

BEEF ABILITIES for fattening bulls

FUNCTIONAL MTF | MIF | NC

UDDER HEALTH	-0,3
FERTILITY	0
PRODUCTIVE LIFE	0,3

MILKING SPEED	103
TEMPERAMENT	105

Easy calving

with conventional semen	95
with sexed semen	95



Pampa, NEUTRINO daughter

NYX

JEREMIAH | UNIMAC | MOHAIR - FR 2531692860 - aAa 516342

CONVENTIONAL HELIX ROBOT CROSSBREEDING ISU **161**

PRODUCTION Dairy Synthesis **+46**

MILK	P kg	F kg	P%	F%	From'MIR	digeR
+850	+36	+46	+0,13	+0,15	+0,7	-0,7

K-Cas **AB** B-Cas **A1A2** Daughters 0 Rel. 76%

TYPE Daughters 1 | Rel. 64% **119**

BODY CAPACITY	116
FEET & LEGS	111
UDDER	108
TEATS	99
BEEF VALUE	115
BEEF ABILITIES	-0,2

BEEF ABILITIES for fattening bulls

FUNCTIONAL MTF | MIF | NC

UDDER HEALTH	0,5
FERTILITY	0,9
PRODUCTIVE LIFE	1,3

MILKING SPEED	116
TEMPERAMENT	118

Easy calving

Calving Ease	95
--------------	----



Jacquette (BRINK), NYX sister

NOELCERNEU

CARGO | ELASTAR | URBANISTE - FR 2541643919 - aAa 243615



ISU
160

PRODUCTION

Dairy Synthesis **+32**

MILK	P kg	F kg	P%	F%	From*MIR	digeR
+878	+25	+39	-0,05	+0,05	-0,3	-0,2

K-Cas AA B-Cas A1A1 Daughters 257 Rel. 95%

TYPE

Daughters 207 | Rel. 86 %

130

	88	100	112	124	130
BODY CAPACITY 111	POOR				EXCELLENT
CHEST WIDTH 107	NARROW				WIDE
CHEST DEPTH 107	SHALLOW				DEEP
THURL WIDTH 117	NARROW				WIDE
RUMP LENGTH 109	SHORT				LONG
RUMP ANGLE 117	SLOPED				FLAT
STATURE 110	SHORT				TALL
FEET & LEGS 109	POOR				EXCELLENT
REAR LEG SET 99	STRAIGHT				SICKLE
FOOT ANGLE 100	LOW				STEEP
REAR LEGS REAR VIEW 120	HOCK-IN				PARALLEL
UDDER 140	POOR				EXCELLENT
FORE UDDER LENGTH 138	LOOSE				STRONG
REAR UDDER HEIGHT 103	LOW				HIGH
REAR UDDER WIDTH 132	NARROW				WIDE
UDDER DEPTH 111	DEEP				SHALLOW
UDDER BALANCE 155	MORE REAR				MORE FORE
UDDER CLEFT 139	WEAK				STRONG
FRONT TEAT PLACEMENT 134	WIDE				CLOSE
TEATS 107	POOR				EXCELLENT
TEAT LENGTH 123	LONG				SHORT
BEEF VALUE 93	POOR				EXCELLENT
BEEF ABILITIES for fattening bulls -0,5	POOR				EXCELLENT

FUNCTIONAL

MTF | MIF | NC

	1	2	2,5
UDDER HEALTH 1,3	NON IMPROVER		IMPROVER
FERTILITY 0,7	NON IMPROVER		IMPROVER
PRODUCTIVE LIFE 1,9	NON IMPROVER		IMPROVER
MILKING SPEED 109	88	100	112 124 130
TEMPERAMENT 106	SLOW		FAST
CALVING EASE	77	88	95
with conventional semen	78		
with sexed semen	87		



Ponachère, NOELCERNEU daughter

OCLIPSE

MARLEY | ILLUSION | RAPALLO - FR 2538152299 - aAa 234165



ISU
184

PRODUCTION

Dairy Synthesis **+53**

MILK	P kg	F kg	P%	F%	From*MIR	digeR
+865	+44	+36	+0,23	+0,04	+0,4	-1,5

K-Cas BB B-Cas A2A2 Daughters 0 Rel. 76%

TYPE

Daughters 0 | Rel. 64 %

128

	88	100	112	124	130
BODY CAPACITY 111	POOR				EXCELLENT
CHEST WIDTH 104	NARROW				WIDE
CHEST DEPTH 105	SHALLOW				DEEP
THURL WIDTH 124	NARROW				WIDE
RUMP LENGTH 107	SHORT				LONG
RUMP ANGLE 116	SLOPED				FLAT
STATURE 117	SHORT				TALL
FEET & LEGS 111	POOR				EXCELLENT
REAR LEG SET 95	STRAIGHT				SICKLE
FOOT ANGLE 95	LOW				STEEP
REAR LEGS REAR VIEW 98	HOCK-IN				PARALLEL
UDDER 129	POOR				EXCELLENT
FORE UDDER LENGTH 107	LOOSE				STRONG
REAR UDDER HEIGHT 120	LOW				HIGH
REAR UDDER WIDTH 111	NARROW				WIDE
UDDER DEPTH 119	DEEP				SHALLOW
UDDER BALANCE 120	MORE REAR				MORE FORE
UDDER CLEFT 120	WEAK				STRONG
FRONT TEAT PLACEMENT 108	WIDE				CLOSE
TEATS 114	POOR				EXCELLENT
TEAT LENGTH 110	LONG				SHORT
BEEF VALUE 116	POOR				EXCELLENT
BEEF ABILITIES for fattening bulls 0,6	POOR				EXCELLENT

FUNCTIONAL

MTF | MIF | MTRF

	1	2	2,5
UDDER HEALTH 2,9	NON IMPROVER		IMPROVER
FERTILITY 0,3	NON IMPROVER		IMPROVER
PRODUCTIVE LIFE 1,8	NON IMPROVER		IMPROVER
MILKING SPEED 94	88	100	112 124 130
TEMPERAMENT 106	SLOW		FAST
CALVING EASE	77	88	95
with conventional semen			
with sexed semen			

Easy calving



Magicienne (ILLUSION), OCLIPSE Dam

ODYNO

MINNESOTA | JOYLAND | EPONA - FR 2538152328 - aAa 135246



ISU
164

PRODUCTION

Dairy Synthesis **+53**

MILK	P kg	F kg	P%	F%	From*MIR	digeR
+1409	+45	+48	+0	-0,12	-0,1	-0,4

K-Cas BB B-Cas A1A2 Daughters 0 Rel. 76%

TYPE

Daughters 0 | Rel. 65 %

120

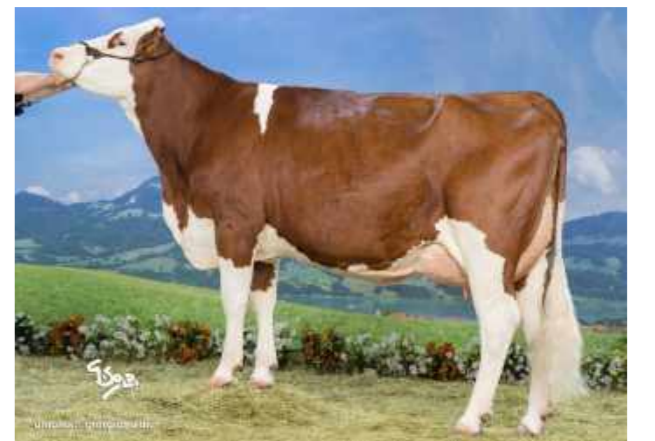
	88	100	112	124	130
BODY CAPACITY 114	POOR				EXCELLENT
CHEST WIDTH 119	NARROW				WIDE
CHEST DEPTH 104	SHALLOW				DEEP
THURL WIDTH 111	NARROW				WIDE
RUMP LENGTH 116	SHORT				LONG
RUMP ANGLE 98	SLOPED				FLAT
STATURE 117	SHORT				TALL
FEET & LEGS 103	POOR				EXCELLENT
REAR LEG SET 108	STRAIGHT				SICKLE
FOOT ANGLE 109	LOW				STEEP
REAR LEGS REAR VIEW 105	HOCK-IN				PARALLEL
UDDER 120	POOR				EXCELLENT
FORE UDDER LENGTH 126	LOOSE				STRONG
REAR UDDER HEIGHT 100	LOW				HIGH
REAR UDDER WIDTH 105	NARROW				WIDE
UDDER DEPTH 118	DEEP				SHALLOW
UDDER BALANCE 127	MORE REAR				MORE FORE
UDDER CLEFT 114	WEAK				STRONG
FRONT TEAT PLACEMENT 114	WIDE				CLOSE
TEATS 99	POOR				EXCELLENT
TEAT LENGTH 83	LONG				SHORT
BEEF VALUE 105	POOR				EXCELLENT
BEEF ABILITIES for fattening bulls -0,4	POOR				EXCELLENT

FUNCTIONAL

MTF | MIC | MTRF

	1	2	2,5
UDDER HEALTH 0,7	NON IMPROVER		IMPROVER
FERTILITY 0,3	NON IMPROVER		IMPROVER
PRODUCTIVE LIFE 1,5	NON IMPROVER		IMPROVER
MILKING SPEED 118	88	100	112 124 130
TEMPERAMENT 112	SLOW		FAST
CALVING EASE	77	88	95
with conventional semen	95		
with sexed semen	95		

Easy calving



Herbale (EPONA), ODYNO Gran Dam



Poisie, NOELCERNEU daughter

OGIVE

MILTON | GLOIR | FOCILLON - FR 7402760042 - aAa 156324



ISU
177

PRODUCTION Dairy Synthesis +35

MILK	P kg	F kg	P%	F%	From*MIR	digeR
+661	+26	+41	+0,05	+0,21	-0,1	+0,5

K-Cas AA B-Cas A1A1 Daughters 0 Rel. 76%

TYPE

Daughters 0 | Rel. 65% 128

BODY CAPACITY	106	POOR	EXCELLENT
CHEST WIDTH	113	NARROW	WIDE
CHEST DEPTH	103	SHALLOW	DEEP
THURL WIDTH	95	NARROW	WIDE
RUMP LENGTH	108	SHORT	LONG
RUMP ANGLE	100	SLOPED	FLAT
STATURE	105	SHORT	TALL
FEET & LEGS	112	POOR	EXCELLENT
REAR LEG SET	105	STRAIGHT	SICKLE
FOOT ANGLE	113	LOW	STEEP
REAR LEGS REAR VIEW	119	HOCK-IN	PARALLEL
UDDER	136	POOR	EXCELLENT
FORE UDDER LENGTH	119	LOOSE	STRONG
REAR UDDER HEIGHT	125	LOW	HIGH
REAR UDDER WIDTH	111	NARROW	WIDE
UDDER DEPTH	130	DEEP	SHALLOW
UDDER BALANCE	134	MORE REAR	MORE FORE
UDDER CLEFT	106	WEAK	STRONG
FRONT TEAT PLACEMENT	125	WIDE	CLOSE
TEATS	110	POOR	EXCELLENT
TEAT LENGTH	112	LONG	SHORT
BEEF VALUE	102	POOR	EXCELLENT
BEEF ABILITIES for fattening bulls	-0,7	POOR	EXCELLENT

FUNCTIONAL MTF | MIF | NC

UDDER HEALTH	1,8	NON IMPROVER	IMPROVER
FERTILITY	2,3	NON IMPROVER	IMPROVER
PRODUCTIVE LIFE	3	NON IMPROVER	IMPROVER

MILKING SPEED 112 TEMPERAMENT 94 CALVING EASE 95

with conventional semen 95 with sexed semen 95

Easy calving



Légende (GLOIR), OGIVE Dam

OSS117

MEZENC | HUMMER | EPONA - FR 3803393241 - aAa 435261



ISU
160

PRODUCTION Dairy Synthesis +59

MILK	P kg	F kg	P%	F%	From*MIR	digeR	K-Cas	B-Cas
+1132	+46	+59	+0,15	+0,18	+0,9	-0,4	BB	A2A2

Daughters 0 Rel. 76%

FUNCTIONAL MTF | MIF | NC

M Speed	107	TEM	113	Calv. Ease	95
---------	-----	-----	-----	------------	----

Easy calving

UDDER HEALTH	0,5	NON IMPROVER	IMPROVER
FERTILITY	0,8	NON IMPROVER	IMPROVER
PRODUCTIVE LIFE	1,1	NON IMPROVER	IMPROVER

TYPE

Daughters 0 | Rel. 64% 117

BODY CAPACITY	106	POOR	EXCELLENT
STATURE	116	SHORT	TALL
FEET & LEGS	121	POOR	EXCELLENT
UDDER	112	POOR	EXCELLENT
TEATS	101	POOR	EXCELLENT
BEEF VALUE	91	POOR	EXCELLENT
BEEF ABILITIES for fattening bulls	-1,7	POOR	EXCELLENT



Magrette (HUMMER), OSS117 Dam

POLNAREFF

NOELCERNEU | GARGANO | VASE - FR 8844209549 - aAa 564132



ISU
171

PRODUCTION Dairy Synthesis +57

MILK	P kg	F kg	P%	F%	From*MIR	digeR	K-Cas	B-Cas
+1107	+44	+59	+0,13	+0,25	+0,7	-0,1	AB	A1A2

Daughters 0 Rel. 75%

FUNCTIONAL MTF | MIF | MTRF

M Speed	106	TEM	101	Calv. Ease	95
---------	-----	-----	-----	------------	----

Easy calving

UDDER HEALTH	1,7	NON IMPROVER	IMPROVER
FERTILITY	1	NON IMPROVER	IMPROVER
PRODUCTIVE LIFE	1,5	NON IMPROVER	IMPROVER

TYPE

Daughters 0 | Rel. 60% 116

BODY CAPACITY	97	POOR	EXCELLENT
STATURE	107	SHORT	TALL
FEET & LEGS	106	POOR	EXCELLENT
UDDER	132	POOR	EXCELLENT
TEATS	107	POOR	EXCELLENT
BEEF VALUE	84	POOR	EXCELLENT
BEEF ABILITIES for fattening bulls	-0,3	POOR	EXCELLENT



POLNAREFF

OMALET

MILTON | HELUX | CORTIL - FR 7033830761 - aAa 564123



ISU
173

PRODUCTION Dairy Synthesis +59

MILK	P kg	F kg	P%	F%	From*MIR	digeR
+1126	+46	+58	+0,14	+0,18	+0,4	+0,5

K-Cas BB B-Cas A1A2 Daughters 0 Rel. 75%

TYPE

Daughters 0 | Rel. 65% 124

BODY CAPACITY	105	POOR	EXCELLENT
CHEST WIDTH	111	NARROW	WIDE
CHEST DEPTH	104	SHALLOW	DEEP
THURL WIDTH	95	NARROW	WIDE
RUMP LENGTH	108	SHORT	LONG
RUMP ANGLE	100	SLOPED	FLAT
STATURE	112	SHORT	TALL
FEET & LEGS	119	POOR	EXCELLENT
REAR LEG SET	81	STRAIGHT	SICKLE
FOOT ANGLE	102	LOW	STEEP
REAR LEGS REAR VIEW	115	HOCK-IN	PARALLEL
UDDER	124	POOR	EXCELLENT
FORE UDDER LENGTH	126	LOOSE	STRONG
REAR UDDER HEIGHT	114	LOW	HIGH
REAR UDDER WIDTH	114	NARROW	WIDE
UDDER DEPTH	110	DEEP	SHALLOW
UDDER BALANCE	133	MORE REAR	MORE FORE
UDDER CLEFT	100	WEAK	STRONG
FRONT TEAT PLACEMENT	106	WIDE	CLOSE
TEATS	115	POOR	EXCELLENT
TEAT LENGTH	116	LONG	SHORT
BEEF VALUE	101	POOR	EXCELLENT
BEEF ABILITIES for fattening bulls	0,3	POOR	EXCELLENT

FUNCTIONAL MTF | MIF | NC

UDDER HEALTH	1,1	NON IMPROVER	IMPROVER
FERTILITY	0,8	NON IMPROVER	IMPROVER
PRODUCTIVE LIFE	1,6	NON IMPROVER	IMPROVER

MILKING SPEED 107 TEMPERAMENT 97 CALVING EASE 95

with conventional semen 95 with sexed semen 95

Easy calving



Macarena (HELUX), OMALET Dam

POSTIT

MORNING | ILAX | CORTIL - FR 2540062436 - aAa 543612



ISU
164

PRODUCTION Dairy Synthesis +55

MILK	P kg	F kg	P%	F%	From*MIR	digeR	K-Cas	B-Cas
+916	+42	+56	+0,18	+0,31	+1,6	-0,6	BB	A2A2

Daughters 0 Rel. 71%

FUNCTIONAL MTF | MIF | MTRF

M Speed	123	TEM	120	Calv. Ease	95
---------	-----	-----	-----	------------	----

Easy calving

UDDER HEALTH	0,1	NON IMPROVER	IMPROVER
FERTILITY	1,5	NON IMPROVER	IMPROVER
PRODUCTIVE LIFE	1	NON IMPROVER	IMPROVER

TYPE

Daughters 0 | Rel. 60% 117

BODY CAPACITY	108	POOR	EXCELLENT
STATURE	97	SHORT	TALL
FEET & LEGS	114	POOR	EXCELLENT
UDDER	115	POOR	EXCELLENT
TEATS	107	POOR	EXCELLENT
BEEF VALUE	97	POOR	EXCELLENT
BEEF ABILITIES for fattening bulls	0,8	POOR	EXCELLENT



Olysee (LUGANO), POSTIT Aunt

ONEMILLION

MORNING | HUMMER | FUZZY - FR 4318213411 - aAa 426351



ISU
173

PRODUCTION

Dairy Synthesis +48

MILK	P kg	F kg	P%	F%	From'MIR	digeR
+632	+33	+56	+0,2	+0,46	+1,8	-0,9

K-Cas AB B-Cas A1A2 Daughters 0 Rel. 76%

TYPE

Daughters 0 | Rel. 64%

132

		88	100	112	124	130	
BODY CAPACITY	113	POOR	[Progress bar]			EXCELLENT	
CHEST WIDTH	111	NARROW	[Progress bar]			WIDE	
CHEST DEPTH	109	SHALLOW	[Progress bar]			DEEP	
THURL WIDTH	106	NARROW	[Progress bar]			WIDE	
RUMP LENGTH	122	SHORT	[Progress bar]			LONG	
RUMP ANGLE	97	SLOPED	[Progress bar]			FLAT	
STATURE	111	SHORT	[Progress bar]			TALL	
FEET & LEGS	119	POOR	[Progress bar]			EXCELLENT	
REAR LEG SET	103	STRAIGHT	[Progress bar]			SICKLE	
FOOT ANGLE	110	LOW	[Progress bar]			STEEP	
REAR LEGS REAR VIEW	101	HOCK-IN	[Progress bar]			PARALLEL	
UDDER	130	POOR	[Progress bar]			EXCELLENT	
FORE UDDER LENGTH	103	LOOSE	[Progress bar]			STRONG	
REAR UDDER HEIGHT	119	LOW	[Progress bar]			HIGH	
REAR UDDER WIDTH	119	NARROW	[Progress bar]			WIDE	
UDDER DEPTH	121	DEEP	[Progress bar]			SHALLOW	
UDDER BALANCE	127	MORE REAR	[Progress bar]			MORE FORE	
UDDER CLEFT	109	WEAK	[Progress bar]			STRONG	
FRONT TEAT PLACEMENT	98	WIDE	[Progress bar]			CLOSE	
TEATS	116	POOR	[Progress bar]			EXCELLENT	
TEAT LENGTH	112	LONG	[Progress bar]			SHORT	
BEEF VALUE	110	POOR	[Progress bar]			EXCELLENT	
BEEF ABILITIES	-0,3	POOR	[Progress bar]			EXCELLENT	

FUNCTIONAL

MTF | MIF | MTRC

		-1	0	1	2	2,5
UDDER HEALTH	1,4	NON IMPROVER	[Progress bar]			IMPROVER
FERTILITY	0,6	NON IMPROVER	[Progress bar]			IMPROVER
PRODUCTIVE LIFE	1,8	NON IMPROVER	[Progress bar]			IMPROVER

		88	100	112	124	130
MILKING SPEED	115	SLOW	[Progress bar]			FAST
TEMPERAMENT	94	LIVELY	[Progress bar]			QUIET

		77	NORMAL	89	EASY CALVING	95
CALVING EASE		[Progress bar]				
with conventional semen	95	[Progress bar]				
with sexed semen	95	[Progress bar]				

Easy calving



ONEMILLION

PACTOLE

MISTIK | JOLIMOME | HOBBIT - FR 5245423226 - aAa 435261



ISU
189

PRODUCTION

Dairy Synthesis +68

MILK	P kg	F kg	P%	F%	From'MIR	digeR
+1235	+55	+59	+0,21	+0,17	+0,6	+0,6

K-Cas BB B-Cas A2A2 Daughters 0 Rel. 74%

TYPE

Daughters 0 | Rel. 62%

126

		88	100	112	124	130	
BODY CAPACITY	106	POOR	[Progress bar]			EXCELLENT	
CHEST WIDTH	100	NARROW	[Progress bar]			WIDE	
CHEST DEPTH	111	SHALLOW	[Progress bar]			DEEP	
THURL WIDTH	102	NARROW	[Progress bar]			WIDE	
RUMP LENGTH	111	SHORT	[Progress bar]			LONG	
RUMP ANGLE	101	SLOPED	[Progress bar]			FLAT	
STATURE	99	SHORT	[Progress bar]			TALL	
FEET & LEGS	124	POOR	[Progress bar]			EXCELLENT	
REAR LEG SET	88	STRAIGHT	[Progress bar]			SICKLE	
FOOT ANGLE	119	LOW	[Progress bar]			STEEP	
REAR LEGS REAR VIEW	99	HOCK-IN	[Progress bar]			PARALLEL	
UDDER	126	POOR	[Progress bar]			EXCELLENT	
FORE UDDER LENGTH	109	LOOSE	[Progress bar]			STRONG	
REAR UDDER HEIGHT	116	LOW	[Progress bar]			HIGH	
REAR UDDER WIDTH	130	NARROW	[Progress bar]			WIDE	
UDDER DEPTH	115	DEEP	[Progress bar]			SHALLOW	
UDDER BALANCE	117	MORE REAR	[Progress bar]			MORE FORE	
UDDER CLEFT	132	WEAK	[Progress bar]			STRONG	
FRONT TEAT PLACEMENT	97	WIDE	[Progress bar]			CLOSE	
TEATS	94	POOR	[Progress bar]			EXCELLENT	
TEAT LENGTH	88	LONG	[Progress bar]			SHORT	
BEEF VALUE	92	POOR	[Progress bar]			EXCELLENT	
BEEF ABILITIES	0,4	POOR	[Progress bar]			EXCELLENT	

BEEF ABILITIES for fattening bulls

FUNCTIONAL

MTF | MIF | MTRF

		-1	0	1	2	2,5
UDDER HEALTH	2	NON IMPROVER	[Progress bar]			IMPROVER
FERTILITY	1,6	NON IMPROVER	[Progress bar]			IMPROVER
PRODUCTIVE LIFE	1,5	NON IMPROVER	[Progress bar]			IMPROVER

		88	100	112	124	130
MILKING SPEED	102	SLOW	[Progress bar]			FAST
TEMPERAMENT	100	LIVELY	[Progress bar]			QUIET

		77	NORMAL	89	EASY CALVING	95
CALVING EASE		[Progress bar]				
with conventional semen	95	[Progress bar]				
with sexed semen	95	[Progress bar]				

Easy calving



Love (HOBBIT), PACTOLE Gran Dam

32

33



umotest@gorgiosoldi.it

Ocarina (MONBEGON), ONEMILLION half-sister



Noisette (JOLIMOME), PACTOLE Dam

HEALTH

HEALTH

SOLIDS

SOLIDS

PALADIO

NOESIS | JEREMIAH | FOSTER - FR 6868713243 - aAa 432561



ISU
179

PRODUCTION Dairy Synthesis +74

MILK	P kg	F kg	P%	F%	From'MIR	digeR
+1633	+60	+70	+0,09	+0,08	-0,4	-0,5

K-Cas BB B-Cas A2A2 Daughters 0 Rel. 70%

TYPE Daughters 0 | Rel. 57% 110

Attribute	Score	Category	Target
BODY CAPACITY	100	POOR	124
CHEST WIDTH	93	NARROW	100
CHEST DEPTH	107	SHALLOW	100
THURL WIDTH	100	NARROW	100
RUMP LENGTH	104	SHORT	100
RUMP ANGLE	107	SLOPED	100
STATURE	108	SHORT	100
FEET & LEGS	107	POOR	100
REAR LEG SET	107	STRAIGHT	100
FOOT ANGLE	83	LOW	100
REAR LEGS REAR VIEW	113	HOCK-IN	100
UDDER	116	POOR	100
FORE UDDER LENGTH	123	LOOSE	100
REAR UDDER HEIGHT	105	LOW	100
REAR UDDER WIDTH	143	NARROW	100
UDDER DEPTH	99	DEEP	100
UDDER BALANCE	132	MORE REAR	100
UDDER CLEFT	100	WEAK	100
FRONT TEAT PLACEMENT	101	WIDE	100
TEATS	98	POOR	100
TEAT LENGTH	94	LONG	100
BEEF VALUE	89	POOR	100
BEEF ABILITIES for fattening bulls	-0,2	POOR	100

FUNCTIONAL

Attribute	Score	Category	Target
UDDER HEALTH	1,7	NON IMPROVER	1,0
FERTILITY	0,8	NON IMPROVER	1,0
PRODUCTIVE LIFE	1,6	NON IMPROVER	1,0
MILKING SPEED	101	SLOW	100
TEMPERAMENT	100	LIVELY	100
CALVING EASE	95	NORMAL	89



Nadine (JEREMIAH), PALADIO Dam

PETERPAN

NETFLIX | JAKOBI | FABLO - FR 7402849681 - aAa 543612



ISU
169

PRODUCTION Dairy Synthesis +72

MILK	P kg	F kg	P%	F%	From'MIR	digeR
+947	+54	+65	+0,38	+0,44	+2	-0,8

K-Cas BB B-Cas A2A2 Daughters 0 Rel. 71%

TYPE Daughters 0 | Rel. 57% 124

Attribute	Score	Category	Target
BODY CAPACITY	113	POOR	124
CHEST WIDTH	116	NARROW	100
CHEST DEPTH	99	SHALLOW	100
THURL WIDTH	109	NARROW	100
RUMP LENGTH	121	SHORT	100
RUMP ANGLE	101	SLOPED	100
STATURE	104	SHORT	100
FEET & LEGS	109	POOR	100
REAR LEG SET	94	STRAIGHT	100
FOOT ANGLE	82	LOW	100
REAR LEGS REAR VIEW	100	HOCK-IN	100
UDDER	125	POOR	100
FORE UDDER LENGTH	120	LOOSE	100
REAR UDDER HEIGHT	123	LOW	100
REAR UDDER WIDTH	112	NARROW	100
UDDER DEPTH	96	DEEP	100
UDDER BALANCE	126	MORE REAR	100
UDDER CLEFT	118	WEAK	100
FRONT TEAT PLACEMENT	100	WIDE	100
TEATS	110	POOR	100
TEAT LENGTH	107	LONG	100
BEEF VALUE	104	POOR	100
BEEF ABILITIES for fattening bulls	1,3	POOR	100

FUNCTIONAL

Attribute	Score	Category	Target
UDDER HEALTH	0,3	NON IMPROVER	1,0
FERTILITY	-0,2	NON IMPROVER	1,0
PRODUCTIVE LIFE	0,8	NON IMPROVER	1,0
MILKING SPEED	119	SLOW	100
TEMPERAMENT	108	LIVELY	100
CALVING EASE	95	NORMAL	89



Nicole (JAKOBI), PETERPAN Dam

PARRAIN

MALPUECH | HOBIWAN | CARUSO - FR 3803467475 - aAa 243165



ISU
173

PRODUCTION Dairy Synthesis +70

MILK	P kg	F kg	P%	F%	From'MIR	digeR
+1733	+58	+67	+0,03	-0,05	-0,1	-0,9

K-Cas AB B-Cas A1A2 Daughters 0 Rel. 76%

TYPE Daughters 0 | Rel. 63% 126

Attribute	Score	Category	Target
BODY CAPACITY	106	POOR	124
CHEST WIDTH	108	NARROW	100
CHEST DEPTH	97	SHALLOW	100
THURL WIDTH	113	NARROW	100
RUMP LENGTH	101	SHORT	100
RUMP ANGLE	102	SLOPED	100
STATURE	95	SHORT	100
FEET & LEGS	123	POOR	100
REAR LEG SET	84	STRAIGHT	100
FOOT ANGLE	98	LOW	100
REAR LEGS REAR VIEW	102	HOCK-IN	100
UDDER	126	POOR	100
FORE UDDER LENGTH	126	LOOSE	100
REAR UDDER HEIGHT	127	LOW	100
REAR UDDER WIDTH	121	NARROW	100
UDDER DEPTH	107	DEEP	100
UDDER BALANCE	128	MORE REAR	100
UDDER CLEFT	107	WEAK	100
FRONT TEAT PLACEMENT	104	WIDE	100
TEATS	103	POOR	100
TEAT LENGTH	94	LONG	100
BEEF VALUE	98	POOR	100
BEEF ABILITIES for fattening bulls	0,7	POOR	100

FUNCTIONAL

Attribute	Score	Category	Target
UDDER HEALTH	0	NON IMPROVER	1,0
FERTILITY	0,8	NON IMPROVER	1,0
PRODUCTIVE LIFE	1,3	NON IMPROVER	1,0
MILKING SPEED	108	SLOW	100
TEMPERAMENT	108	LIVELY	100
CALVING EASE	92	NORMAL	89



Marraine (HOBIWAN), PARRAIN Dam

PIAGGIO

NOELCERNEU | JOOKI | FUSIONNEL - FR 2538975838 - aAa 615243



ISU
165

PRODUCTION Dairy Synthesis +43

MILK	P kg	F kg	P%	F%	From'MIR	digeR
+691	+34	+34	+0,22	+0,13	+0,3	-0,8

K-Cas AB B-Cas A1A2 Daughters 0 Rel. 75%

TYPE Daughters 0 | Rel. 64% 136

Attribute	Score	Category	Target
BODY CAPACITY	116	POOR	124
CHEST WIDTH	103	NARROW	100
CHEST DEPTH	118	SHALLOW	100
THURL WIDTH	109	NARROW	100
RUMP LENGTH	133	SHORT	100
RUMP ANGLE	99	SLOPED	100
STATURE	115	SHORT	100
FEET & LEGS	111	POOR	100
REAR LEG SET	118	STRAIGHT	100
FOOT ANGLE	96	LOW	100
REAR LEGS REAR VIEW	124	HOCK-IN	100
UDDER	147	POOR	100
FORE UDDER LENGTH	137	LOOSE	100
REAR UDDER HEIGHT	115	LOW	100
REAR UDDER WIDTH	125	NARROW	100
UDDER DEPTH	117	DEEP	100
UDDER BALANCE	152	MORE REAR	100
UDDER CLEFT	131	WEAK	100
FRONT TEAT PLACEMENT	129	WIDE	100
TEATS	120	POOR	100
TEAT LENGTH	129	LONG	100
BEEF VALUE	84	POOR	100
BEEF ABILITIES for fattening bulls	0	POOR	100

FUNCTIONAL

Attribute	Score	Category	Target
UDDER HEALTH	0,6	NON IMPROVER	1,0
FERTILITY	1	NON IMPROVER	1,0
PRODUCTIVE LIFE	2,4	NON IMPROVER	1,0
MILKING SPEED	121	SLOW	100
TEMPERAMENT	110	LIVELY	100
CALVING EASE	95	NORMAL	89



Jugeotte (FUSIONNEL), PIAGGIO Gran Dam

PINKFLOYD

NINO JB | HOMYGOD | FOSCARI - FR 5233013011 - aAa 432561



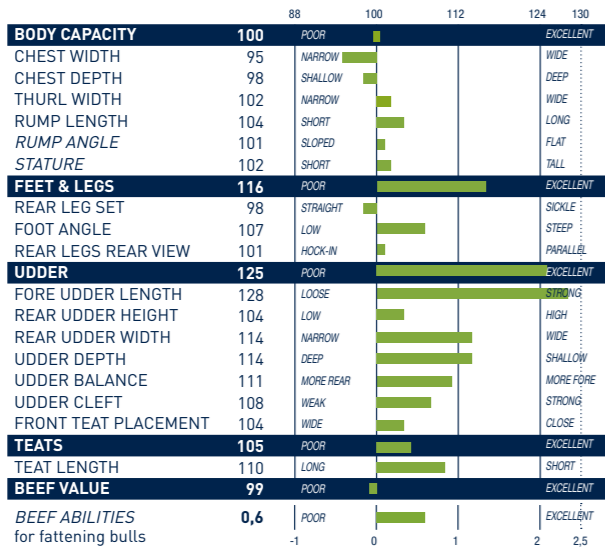
ISU
172

PRODUCTION Dairy Synthesis +43

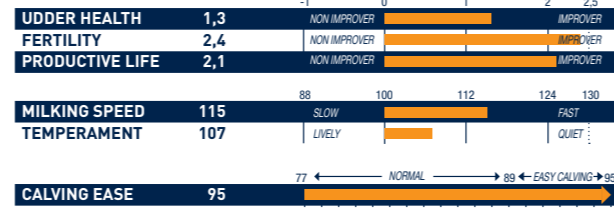
MILK	P kg	F kg	P%	F%	From'MIR	digeR
+668	+34	+36	+0,17	+0,14	+0,9	+0,8

K-Cas BB B-Cas A2A2 Daughters 0 Rel. 75%

TYPE Daughters 0 | Rel. 63% 120



FUNCTIONAL



Easy calving



Moustache (HOMYGOD), PINKFLOYD Dam

POMPILOP

NARUTO | LONESTAR | HALLEZ - FR 2539746173 - aAa 246315



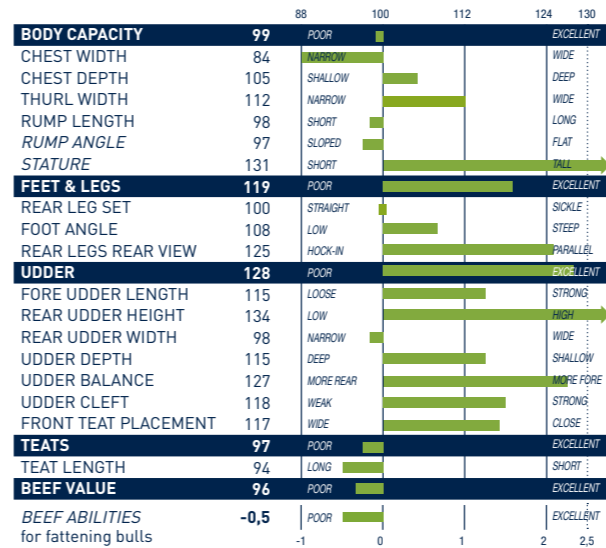
ISU
161

PRODUCTION Dairy Synthesis +58

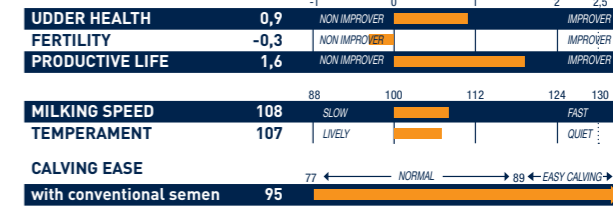
MILK	P kg	F kg	P%	F%	From'MIR	digeR
+901	+46	+48	+0,27	+0,22	+1,2	-1

K-Cas AB B-Cas A1A2 Daughters 0 Rel. 72%

TYPE Daughters 0 | Rel. 60% 122



FUNCTIONAL



Easy calving



Orange (LONESTAR), POMPILOP Dam

PITTSBURGH

NEKFEU | IMPEC | URBANISTE - FR 2537331713 - aAa 534126



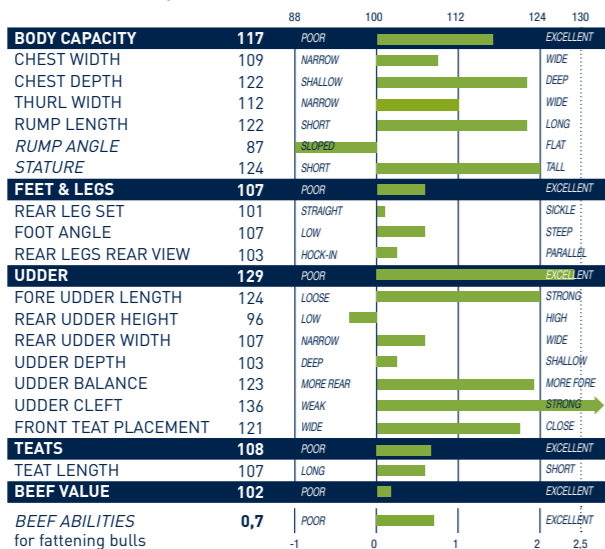
ISU
168

PRODUCTION Dairy Synthesis +59

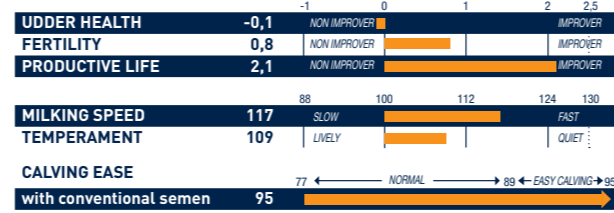
MILK	P kg	F kg	P%	F%	From'MIR	digeR
+1225	+50	+44	+0,15	-0,08	-0,5	+1,5

K-Cas AB B-Cas A1A2 Daughters 0 Rel. 75%

TYPE Daughters 0 | Rel. 64% 128



FUNCTIONAL



Easy calving



NaficiaVR (IMPEC), PITTSBURGH Aunt

POPECK

MISTIK | LEADER | ILANNE - FR 7120758200 - aAa 561432



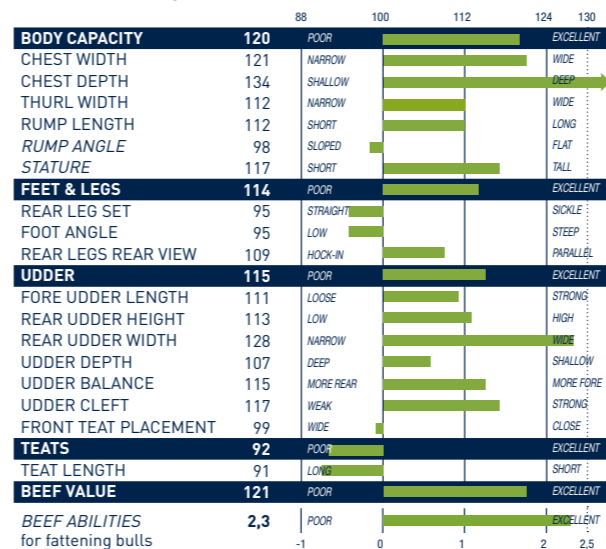
ISU
182

PRODUCTION Dairy Synthesis +67

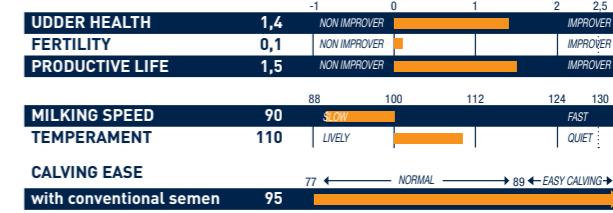
MILK	P kg	F kg	P%	F%	From'MIR	digeR
+1339	+55	+56	+0,17	+0,05	+0,5	+0,5

K-Cas BB B-Cas A2A2 Daughters 0 Rel. 74%

TYPE Daughters 0 | Rel. 62% 127



FUNCTIONAL



Easy calving



New Look (LEADER), POPECK Dam

PORTORICO

NINO JB | JEBOLAN | GRAF - FR 5632283334 - aAa 465231



ISU
177

PRODUCTION Dairy Synthesis +59

MILK	P kg	F kg	P%	F%	From'MIR	digeR
+1633	+49	+61	-0,05	-0,04	-0,9	+1

K-Cas BB B-Cas A2A2 Daughters 0 Rel. 75%

TYPE Daughters 0 | Rel. 61% 120

Attribute	Score	Quality
BODY CAPACITY	102	POOR
CHEST WIDTH	94	NARROW
CHEST DEPTH	106	SHALLOW
THURL WIDTH	101	NARROW
RUMP LENGTH	108	SHORT
RUMP ANGLE	85	SLOPED
STATURE	105	SHORT
FEET & LEGS	109	POOR
REAR LEG SET	94	STRAIGHT
FOOT ANGLE	96	LOW
REAR LEGS REAR VIEW	92	HOCK-IN
UDDER	131	POOR
FORE UDDER LENGTH	134	LOOSE
REAR UDDER HEIGHT	117	LOW
REAR UDDER WIDTH	96	NARROW
UDDER DEPTH	109	DEEP
UDDER BALANCE	121	MORE REAR
UDDER CLEFT	128	WEAK
FRONT TEAT PLACEMENT	97	WIDE
TEATS	109	POOR
TEAT LENGTH	113	LONG
BEEF VALUE	86	POOR
BEEF ABILITIES for fattening bulls	-1,9	POOR

FUNCTIONAL

Attribute	Score	Quality
UDDER HEALTH	0,6	NON IMPROVER
FERTILITY	2,8	NON IMPROVER
PRODUCTIVE LIFE	2,3	NON IMPROVER
MILKING SPEED	115	SLOW
TEMPERAMENT	111	LIVELY
CALVING EASE	95	NORMAL

Easy calving



Joufflue (GRAF), PORTORICO Gran Dam

RADCLIFFE

ILAX | HACKER | REDON - FR 2542548678 - aAa 351462



ISU
171

PRODUCTION Dairy Synthesis +60

MILK	P kg	F kg	P%	F%	From'MIR	digeR
+1714	+51	+59	-0,07	-0,16	-0,9	-0,6

K-Cas BB B-Cas A2A2 Daughters 0 Rel. 76%

TYPE Daughters 0 | Rel. 65% 113

Attribute	Score	Quality
BODY CAPACITY	103	POOR
CHEST WIDTH	103	NARROW
CHEST DEPTH	103	SHALLOW
THURL WIDTH	98	NARROW
RUMP LENGTH	106	SHORT
RUMP ANGLE	94	SLOPED
STATURE	111	SHORT
FEET & LEGS	107	POOR
REAR LEG SET	104	STRAIGHT
FOOT ANGLE	97	LOW
REAR LEGS REAR VIEW	109	HOCK-IN
UDDER	117	POOR
FORE UDDER LENGTH	101	LOOSE
REAR UDDER HEIGHT	123	LOW
REAR UDDER WIDTH	113	NARROW
UDDER DEPTH	106	DEEP
UDDER BALANCE	118	MORE REAR
UDDER CLEFT	108	WEAK
FRONT TEAT PLACEMENT	93	WIDE
TEATS	105	POOR
TEAT LENGTH	90	LONG
BEEF VALUE	93	POOR
BEEF ABILITIES for fattening bulls	0	POOR

FUNCTIONAL

Attribute	Score	Quality
UDDER HEALTH	1,2	NON IMPROVER
FERTILITY	0,3	NON IMPROVER
PRODUCTIVE LIFE	2,1	NON IMPROVER
MILKING SPEED	112	SLOW
TEMPERAMENT	123	LIVELY
CALVING EASE	95	NORMAL

Easy calving



Legende (HACKER), RADCLIFFE Dam

PUNTO

MILTON | JASMINO | HARPER - FR 3564460732 - aAa 651423



ISU
182

PRODUCTION Dairy Synthesis +60

MILK	P kg	F kg	P%	F%	From'MIR	digeR
+846	+43	+67	+0,24	+0,49	+1,6	+0,6

K-Cas BB B-Cas A2A2 Daughters 0 Rel. 76%

TYPE Daughters 0 | Rel. 65% 118

Attribute	Score	Quality
BODY CAPACITY	91	POOR
CHEST WIDTH	94	NARROW
CHEST DEPTH	91	SHALLOW
THURL WIDTH	88	NARROW
RUMP LENGTH	93	SHORT
RUMP ANGLE	84	SLOPED
STATURE	109	SHORT
FEET & LEGS	122	POOR
REAR LEG SET	89	STRAIGHT
FOOT ANGLE	109	LOW
REAR LEGS REAR VIEW	117	HOCK-IN
UDDER	127	POOR
FORE UDDER LENGTH	117	LOOSE
REAR UDDER HEIGHT	116	LOW
REAR UDDER WIDTH	106	NARROW
UDDER DEPTH	116	DEEP
UDDER BALANCE	127	MORE REAR
UDDER CLEFT	105	WEAK
FRONT TEAT PLACEMENT	117	WIDE
TEATS	106	POOR
TEAT LENGTH	106	LONG
BEEF VALUE	87	POOR
BEEF ABILITIES for fattening bulls	1	POOR

FUNCTIONAL

Attribute	Score	Quality
UDDER HEALTH	1,8	NON IMPROVER
FERTILITY	1,4	NON IMPROVER
PRODUCTIVE LIFE	2,2	NON IMPROVER
MILKING SPEED	102	SLOW
TEMPERAMENT	110	LIVELY
CALVING EASE	95	NORMAL

Easy calving



PUNTO

RAHAN

NYMERIO | JIBICE | HONEY - FR 2545009153 - aAa 564132



ISU
165

PRODUCTION Dairy Synthesis +61

MILK	P kg	F kg	P%	F%	From'MIR	digeR
+1245	+52	+48	+0,15	-0,13	+0,1	-1,4

K-Cas BB B-Cas A1A1 Daughters 0 Rel. 70%

TYPE Daughters 0 | Rel. 57% 118

Attribute	Score	Quality
BODY CAPACITY	106	POOR
CHEST WIDTH	92	NARROW
CHEST DEPTH	110	SHALLOW
THURL WIDTH	104	NARROW
RUMP LENGTH	122	SHORT
RUMP ANGLE	107	SLOPED
STATURE	105	SHORT
FEET & LEGS	111	POOR
REAR LEG SET	99	STRAIGHT
FOOT ANGLE	89	LOW
REAR LEGS REAR VIEW	97	HOCK-IN
UDDER	123	POOR
FORE UDDER LENGTH	110	LOOSE
REAR UDDER HEIGHT	130	LOW
REAR UDDER WIDTH	126	NARROW
UDDER DEPTH	105	DEEP
UDDER BALANCE	113	MORE REAR
UDDER CLEFT	106	WEAK
FRONT TEAT PLACEMENT	113	WIDE
TEATS	106	POOR
TEAT LENGTH	101	LONG
BEEF VALUE	86	POOR
BEEF ABILITIES for fattening bulls	-1	POOR

FUNCTIONAL

Attribute	Score	Quality
UDDER HEALTH	1,1	NON IMPROVER
FERTILITY	0,8	NON IMPROVER
PRODUCTIVE LIFE	1,5	NON IMPROVER
MILKING SPEED	91	SLOW
TEMPERAMENT	110	LIVELY
CALVING EASE	95	NORMAL

Easy calving



Ombrelle (JIBICE), RAHAN Dam

RANGOON

OZONE | JILBEER | BRINK - FR 01540086551 - aAa 561432



ISU
164

PRODUCTION

Dairy Synthesis +59

MILK	P kg	F kg	P%	F%	From*MIR	digeR
+748	+45	+54	+0,3	+0,36	+1,7	-0,8

K-Cas AB B-Cas A1A2 Daughters 0 Rel. 70%

TYPE

Daughters 0 | Rel. 57%

125

TRAIT	SCORE	POOR	EXCELLENT
BODY CAPACITY	120	POOR	EXCELLENT
CHEST WIDTH	120	NARROW	WIDE
CHEST DEPTH	126	SHALLOW	DEEP
THURL WIDTH	121	NARROW	WIDE
RUMP LENGTH	111	SHORT	LONG
RUMP ANGLE	87	SLOPED	FLAT
STATURE	106	SHORT	TALL
FEET & LEGS	109	POOR	EXCELLENT
REAR LEG SET	107	STRAIGHT	SICKLE
FOOT ANGLE	100	LOW	STEEP
REAR LEGS REAR VIEW	112	HOCK-IN	PARALLEL
UDDER	116	POOR	EXCELLENT
FORE UDDER LENGTH	123	LOOSE	STRONG
REAR UDDER HEIGHT	101	LOW	HIGH
REAR UDDER WIDTH	119	NARROW	WIDE
UDDER DEPTH	101	DEEP	SHALLOW
UDDER BALANCE	113	MORE REAR	MORE FORE
UDDER CLEFT	103	WEAK	STRONG
FRONT TEAT PLACEMENT	108	WIDE	CLOSE
TEATS	110	POOR	EXCELLENT
TEAT LENGTH	118	LONG	SHORT
BEEF VALUE	116	POOR	EXCELLENT
BEEF ABILITIES for fattening bulls	2,1	POOR	EXCELLENT

FUNCTIONAL

MTF | MIF | MTRC

UDDER HEALTH	-0,1	NON IMPROVER	IMPROVER
FERTILITY	0,9	NON IMPROVER	IMPROVER
PRODUCTIVE LIFE	0,8	NON IMPROVER	IMPROVER

MILKING SPEED	92	SLOW	FAST
TEMPERAMENT	112	LIVELY	QUIET

CALVING EASE	95	NORMAL	EASY CALVING
--------------	----	--------	--------------

with conventional semen 95
with sexed semen 95
Easy calving



RANGOON

RECORDMAN

MINNESOTA | JEBOLAN | HYPER - FR 2223641060 - aAa 243651



ISU
186

PRODUCTION

Dairy Synthesis +72

MILK	P kg	F kg	P%	F%	From*MIR	digeR
+1331	+59	+58	+0,27	+0,07	+0,8	-1

K-Cas BB B-Cas A2A2 Daughters 0 Rel. 76%

TYPE

Daughters 0 | Rel. 61%

127

TRAIT	SCORE	POOR	EXCELLENT
BODY CAPACITY	115	POOR	EXCELLENT
CHEST WIDTH	110	NARROW	WIDE
CHEST DEPTH	109	SHALLOW	DEEP
THURL WIDTH	118	NARROW	WIDE
RUMP LENGTH	121	SHORT	LONG
RUMP ANGLE	89	SLOPED	FLAT
STATURE	117	SHORT	TALL
FEET & LEGS	118	POOR	EXCELLENT
REAR LEG SET	102	STRAIGHT	SICKLE
FOOT ANGLE	101	LOW	STEEP
REAR LEGS REAR VIEW	105	HOCK-IN	PARALLEL
UDDER	123	POOR	EXCELLENT
FORE UDDER LENGTH	126	LOOSE	STRONG
REAR UDDER HEIGHT	116	LOW	HIGH
REAR UDDER WIDTH	105	NARROW	WIDE
UDDER DEPTH	119	DEEP	SHALLOW
UDDER BALANCE	130	MORE REAR	MORE FORE
UDDER CLEFT	105	WEAK	STRONG
FRONT TEAT PLACEMENT	92	WIDE	CLOSE
TEATS	98	POOR	EXCELLENT
TEAT LENGTH	97	LONG	SHORT
BEEF VALUE	96	POOR	EXCELLENT
BEEF ABILITIES for fattening bulls	-0,7	POOR	EXCELLENT

FUNCTIONAL

MTC | MIF | MTRF

UDDER HEALTH	0,9	NON IMPROVER	IMPROVER
FERTILITY	2	NON IMPROVER	IMPROVER
PRODUCTIVE LIFE	1,8	NON IMPROVER	IMPROVER

MILKING SPEED	109	SLOW	FAST
TEMPERAMENT	120	LIVELY	QUIET

CALVING EASE	95	NORMAL	EASY CALVING
--------------	----	--------	--------------

with conventional semen 95
with sexed semen 95
Easy calving



RECORDMAN

RAZON

ILANNE | JEREMIAH | GAZEIL - FR 8577578750 - aAa 156342



ISU
172

PRODUCTION

Dairy Synthesis +62

MILK	P kg	F kg	P%	F%	From*MIR	digeR
+1100	+49	+55	+0,21	+0,2	+1,2	+0,9

K-Cas BB B-Cas A2A2 Daughters 0 Rel. 76%

TYPE

Daughters 0 | Rel. 65%

127

TRAIT	SCORE	POOR	EXCELLENT
BODY CAPACITY	110	POOR	EXCELLENT
CHEST WIDTH	100	NARROW	WIDE
CHEST DEPTH	115	SHALLOW	DEEP
THURL WIDTH	102	NARROW	WIDE
RUMP LENGTH	124	SHORT	LONG
RUMP ANGLE	111	SLOPED	FLAT
STATURE	120	SHORT	TALL
FEET & LEGS	126	POOR	EXCELLENT
REAR LEG SET	80	STRAIGHT	SICKLE
FOOT ANGLE	114	LOW	STEEP
REAR LEGS REAR VIEW	94	HOCK-IN	PARALLEL
UDDER	120	POOR	EXCELLENT
FORE UDDER LENGTH	132	LOOSE	STRONG
REAR UDDER HEIGHT	93	LOW	HIGH
REAR UDDER WIDTH	113	NARROW	WIDE
UDDER DEPTH	129	DEEP	SHALLOW
UDDER BALANCE	110	MORE REAR	MORE FORE
UDDER CLEFT	100	WEAK	STRONG
FRONT TEAT PLACEMENT	96	WIDE	CLOSE
TEATS	108	POOR	EXCELLENT
TEAT LENGTH	96	LONG	SHORT
BEEF VALUE	103	POOR	EXCELLENT
BEEF ABILITIES for fattening bulls	0,2	POOR	EXCELLENT

FUNCTIONAL

MTF | MIF | MTRF

UDDER HEALTH	0	NON IMPROVER	IMPROVER
FERTILITY	1	NON IMPROVER	IMPROVER
PRODUCTIVE LIFE	1,8	NON IMPROVER	IMPROVER

MILKING SPEED	118	SLOW	FAST
TEMPERAMENT	135	LIVELY	QUIET

CALVING EASE	95	NORMAL	EASY CALVING
--------------	----	--------	--------------

Easy calving



Nacree (JEREMIAH), RAZON Aunt



Noblesse (JEBOLAN), RECORDMAN Dam

RIGOLETTO

NIRVANAVR | LEDZEP | HACKER - FR 7041104299 - aAa 462531



ISU
186

PRODUCTION

Dairy Synthesis +73

MILK	P kg	F kg	P%	F%	From'MIR	digeR
+1794	+62	+64	+0,02	-0,15	-0,8	+1,9

K-Cas AB B-Cas A1A2 Daughters 0 Rel. 75%

TYPE

Daughters 0 | Rel. 63%

121

TRAIT	SCORE	POOR	GOOD	EXCELLENT
BODY CAPACITY	103	POOR		EXCELLENT
CHEST WIDTH	108	NARROW		WIDE
CHEST DEPTH	103	SHALLOW		DEEP
THURL WIDTH	96	NARROW		WIDE
RUMP LENGTH	103	SHORT		LONG
RUMP ANGLE	113	SLOPED		FLAT
STATURE	111	SHORT		TALL
FEET & LEGS	127	POOR		EXCELLENT
REAR LEG SET	75	STRAIGHT		SICKLE
FOOT ANGLE	115	LOW		STEEP
REAR LEGS REAR VIEW	96	HOCK-IN		PARALLEL
UDDER	117	POOR		EXCELLENT
FORE UDDER LENGTH	118	LOOSE		STRONG
REAR UDDER HEIGHT	101	LOW		HIGH
REAR UDDER WIDTH	122	NARROW		WIDE
UDDER DEPTH	120	DEEP		SHALLOW
UDDER BALANCE	136	MORE REAR		MORE FORE
UDDER CLEFT	100	WEAK		STRONG
FRONT TEAT PLACEMENT	111	WIDE		CLOSE
TEATS	104	POOR		EXCELLENT
TEAT LENGTH	100	LONG		SHORT
BEEF VALUE	95	POOR		EXCELLENT
BEEF ABILITIES for fattening bulls	-1,5	POOR		EXCELLENT

FUNCTIONAL

MTF | MIF | MTRF

TRAIT	SCORE	NON IMPROVER	IMPROVER
UDDER HEALTH	1,6		IMPROVER
FERTILITY	0,7		IMPROVER
PRODUCTIVE LIFE	2,2		IMPROVER

TRAIT	SCORE	SLOW	FAST
MILKING SPEED	112		FAST
TEMPERAMENT	118	LIVELY	QUIET

TRAIT	SCORE	77	NORMAL	89	EASY CALVING	95
CALVING EASE with conventional semen	95					
with sexed semen	95					

Easy calving



RIGOLETTO

RINVADER

ORCK | LELABEL | FELINDRA - FR 2525114377 - aAa 516324



ISU
175

PRODUCTION

Dairy Synthesis +53

MILK	P kg	F kg	P%	F%	From'MIR	digeR
+1126	+47	+32	+0,17	-0,17	-1,2	+2

K-Cas AB B-Cas A1A2 Daughters 0 Rel. 70%

TYPE

Daughters 0 | Rel. 54%

130

TRAIT	SCORE	POOR	GOOD	EXCELLENT
BODY CAPACITY	116	POOR		EXCELLENT
CHEST WIDTH	111	NARROW		WIDE
CHEST DEPTH	119	SHALLOW		DEEP
THURL WIDTH	109	NARROW		WIDE
RUMP LENGTH	123	SHORT		LONG
RUMP ANGLE	94	SLOPED		FLAT
STATURE	127	SHORT		TALL
FEET & LEGS	110	POOR		EXCELLENT
REAR LEG SET	94	STRAIGHT		SICKLE
FOOT ANGLE	103	LOW		STEEP
REAR LEGS REAR VIEW	110	HOCK-IN		PARALLEL
UDDER	134	POOR		EXCELLENT
FORE UDDER LENGTH	127	LOOSE		STRONG
REAR UDDER HEIGHT	112	LOW		HIGH
REAR UDDER WIDTH	126	NARROW		WIDE
UDDER DEPTH	122	DEEP		SHALLOW
UDDER BALANCE	127	MORE REAR		MORE FORE
UDDER CLEFT	108	WEAK		STRONG
FRONT TEAT PLACEMENT	131	WIDE		CLOSE
TEATS	108	POOR		EXCELLENT
TEAT LENGTH	114	LONG		SHORT
BEEF VALUE	96	POOR		EXCELLENT
BEEF ABILITIES for fattening bulls	0,4	POOR		EXCELLENT

FUNCTIONAL

MTF | MIF | MTRF

TRAIT	SCORE	NON IMPROVER	IMPROVER
UDDER HEALTH	0,9		IMPROVER
FERTILITY	1,2		IMPROVER
PRODUCTIVE LIFE	2,5		IMPROVER

TRAIT	SCORE	SLOW	FAST
MILKING SPEED	113		FAST
TEMPERAMENT	109	LIVELY	QUIET

TRAIT	SCORE	77	NORMAL	89	EASY CALVING	95
CALVING EASE with conventional semen	95					
with sexed semen	95					

Easy calving



Invasion (ULEMO), RINVADER family, 7th lactation

44

GRAZING

PRODUCTION



umotest@giorgiosoldi.it

Nuppie (LEDZEP), RIGOLETTO Dam



umotest@giorgiosoldi.it

Obsession (LELABEL), RINVADER Dam

HEALTH

POWERFULL

RISTRETTO

ONGLOIS | LAGRONS | HYPER - FR 2543595962 - aAa 462531



Ortola (LAGRONS), RISTRETTO Dam

ISU 177

PRODUCTION Dairy Synthesis +61

MILK	P kg	F kg	P%	F%	From'MIR	digeR	K-Cas	B-Cas
+1252	+52	+44	+0,19	-0,06	+0,1	-1,1	AB	A1A2

Daughters 0 Rel. 70%

FUNCTIONAL MTF | MIF | MTRF

M Speed	TEM	Calv. Ease
108	101	95

Easy calving

UDDER HEALTH	0,8	NON IMPROVER	IMPROVER
FERTILITY	1,4	NON IMPROVER	IMPROVER
PRODUCTIVE LIFE	2,1	NON IMPROVER	IMPROVER

TYPE Daughters 0 | Rel. 57% 124

BODY CAPACITY	106	POOR	EXCELLENT
STATURE	102	SHORT	TALL
FEET & LEGS	116	POOR	EXCELLENT
UDDER	121	POOR	EXCELLENT
TEATS	111	POOR	EXCELLENT
BEEF VALUE	118	POOR	EXCELLENT

BEEF ABILITIES for fattening bulls: 0,1

RUDOLPH

OFFMAN | JEREMIAH | GINASTERA - FR 2532233958 - aAa



Nicola (JEREMIAH), RUDOLPH Dam

ISU 172

PRODUCTION Dairy Synthesis +57

MILK	P kg	F kg	P%	F%	From'MIR	digeR	K-Cas	B-Cas
+1428	+48	+49	+0,05	-0,12	-0,8	-0,1	AB	A1A2

Daughters 0 Rel. 70%

FUNCTIONAL MTF | MIF | MTRF

M Speed	TEM	Calv. Ease
103	124	95

Easy calving

UDDER HEALTH	0,9	NON IMPROVER	IMPROVER
FERTILITY	0,7	NON IMPROVER	IMPROVER
PRODUCTIVE LIFE	1,3	NON IMPROVER	IMPROVER

TYPE Daughters 0 | Rel. 58% 132

BODY CAPACITY	117	POOR	EXCELLENT
STATURE	130	SHORT	TALL
FEET & LEGS	125	POOR	EXCELLENT
UDDER	124	POOR	EXCELLENT
TEATS	95	POOR	EXCELLENT
BEEF VALUE	105	POOR	EXCELLENT

BEEF ABILITIES for fattening bulls: -0,5

RUSSEY

OGIVE | LANISTER | BRINK - FR 2545749027 - aAa 645213



Cearina (LANISTER), RUSSEY Dam

ISU 172

PRODUCTION Dairy Synthesis +48

MILK	P kg	F kg	P%	F%	From'MIR	digeR	K-Cas	B-Cas
+658	+35	+50	+0,22	+0,4	+0,8	-1,2	AB	A1A2

Daughters 0 Rel. 70%

FUNCTIONAL MTF | MIF | MTRF

M Speed	TEM	Calv. Ease
113	97	95

Easy calving

UDDER HEALTH	0,7	NON IMPROVER	IMPROVER
FERTILITY	1,9	NON IMPROVER	IMPROVER
PRODUCTIVE LIFE	1,6	NON IMPROVER	IMPROVER

TYPE Daughters 0 | Rel. 57% 134

BODY CAPACITY	121	POOR	EXCELLENT
STATURE	111	SHORT	TALL
FEET & LEGS	111	POOR	EXCELLENT
UDDER	131	POOR	EXCELLENT
TEATS	108	POOR	EXCELLENT
BEEF VALUE	112	POOR	EXCELLENT

BEEF ABILITIES for fattening bulls: -0,8

ROANNAIS

OVERNIA | MEMPHIS | HORTON - FR 7120200934 - aAa 156423

ISU 187

PRODUCTION

Dairy Synthesis +60

MILK	P kg	F kg	P%	F%	From'MIR	digeR
+1359	+51	+47	+0,11	-0,11	-0,1	-1,6

K-Cas AB B-Cas A1A2 Daughters 0 Rel. 70%

TYPE

Daughters 0 | Rel. 57%

130

BODY CAPACITY	111	POOR	EXCELLENT
CHEST WIDTH	111	NARROW	WIDE
CHEST DEPTH	112	SHALLOW	DEEP
THURL WIDTH	107	NARROW	WIDE
RUMP LENGTH	110	SHORT	LONG
RUMP ANGLE	88	SLOPED	FLAT
STATURE	111	SHORT	TALL
FEET & LEGS	123	POOR	EXCELLENT
REAR LEG SET	104	STRAIGHT	SICKLE
FOOT ANGLE	99	LOW	STEEP
REAR LEGS REAR VIEW	110	HOCK-IN	PARALLEL
UDDER	126	POOR	EXCELLENT
FORE UDDER LENGTH	115	LOOSE	STRONG
REAR UDDER HEIGHT	110	LOW	HIGH
REAR UDDER WIDTH	110	NARROW	WIDE
UDDER DEPTH	116	DEEP	SHALLOW
UDDER BALANCE	107	MORE REAR	MORE FORE
UDDER CLEFT	115	WEAK	STRONG
FRONT TEAT PLACEMENT	104	WIDE	CLOSE
TEATS	107	POOR	EXCELLENT
TEAT LENGTH	103	LONG	SHORT
BEEF VALUE	108	POOR	EXCELLENT

BEEF ABILITIES for fattening bulls: -1,2

FUNCTIONAL

MTF | MIF | MTRF

UDDER HEALTH	1,4	NON IMPROVER	IMPROVER
FERTILITY	2	NON IMPROVER	IMPROVER
PRODUCTIVE LIFE	2,7	NON IMPROVER	IMPROVER

MILKING SPEED	103	88	100	112	124	130
TEMPERAMENT	107	SLOW	LIVELY	QUIET	FAST	QUIET

CALVING EASE

with conventional semen	95	77	NORMAL	89	EASY CALVING	95
with sexed semen	95					

Easy calving



ROANNAIS



umotest@giorgiosoldi.it

Ogazelle (MEMPHIS), ROANNAIS Dam

ROCTAVIO

OWINGS | LELABEL | IMPEC - FR 4425919608 - aAa 516432



ISU
180

PRODUCTION

Dairy Synthesis +67

MILK	P kg	F kg	P%	F%	From'MIR	digeR
+1257	+53	+65	+0,17	+0,23	+1	+0,2

K-Cas AB B-Cas A1A2 Daughters 0 Rel. 70%

TYPE

Daughters 0 | Rel. 58 %

121

TRAIT	SCORE	POOR	GOOD	EXCELLENT
BODY CAPACITY	115	88	100	130
CHEST WIDTH	117	NARROW		WIDE
CHEST DEPTH	117	SHALLOW		DEEP
THURL WIDTH	104	NARROW		WIDE
RUMP LENGTH	120	SHORT		LONG
RUMP ANGLE	79	SLOPED		FLAT
STATURE	122	SHORT		TALL
FEET & LEGS	113	POOR		EXCELLENT
REAR LEG SET	98	STRAIGHT		SICKLE
FOOT ANGLE	112	LOW		STEEP
REAR LEGS REAR VIEW	110	HOCK-IN		PARALLEL
UDDER	112	POOR		EXCELLENT
FORE UDDER LENGTH	121	LOOSE		STRONG
REAR UDDER HEIGHT	110	LOW		HIGH
REAR UDDER WIDTH	115	NARROW		WIDE
UDDER DEPTH	109	DEEP		SHALLOW
UDDER BALANCE	130	MORE REAR		MORE FORE
UDDER CLEFT	92	WEAK		STRONG
FRONT TEAT PLACEMENT	108	WIDE		CLOSE
TEATS	100	POOR		EXCELLENT
TEAT LENGTH	112	LONG		SHORT
BEEF VALUE	110	POOR		EXCELLENT
BEEF ABILITIES for fattening bulls	0,7	POOR		EXCELLENT

FUNCTIONAL

MTF | MIF | MTRF

TRAIT	SCORE	NON IMPROVER	IMPROVER
UDDER HEALTH	1,3		
FERTILITY	0,9		
PRODUCTIVE LIFE	1,1		

TRAIT	SCORE	SLOW	FAST
MILKING SPEED	104		
TEMPERAMENT	116	LIVELY	QUIET

TRAIT	SCORE	NORMAL	EASY CALVING
CALVING EASE	95		

with conventional semen 95
with sexed semen 95
Easy calving



ROCTAVIO

ROOFTOP

ODYNO | MILTON | HITCHI - FR 2542672130 - aAa 564123



ISU
185

PRODUCTION

Dairy Synthesis +64

MILK	P kg	F kg	P%	F%	From'MIR	digeR
+1028	+48	+64	+0,24	+0,37	+1,2	+0,6

K-Cas BB B-Cas A1A2 Daughters 0 Rel. 70%

TYPE

Daughters 0 | Rel. 54 %

134

TRAIT	SCORE	POOR	GOOD	EXCELLENT
BODY CAPACITY	107	88	100	130
CHEST WIDTH	104	NARROW		WIDE
CHEST DEPTH	103	SHALLOW		DEEP
THURL WIDTH	102	NARROW		WIDE
RUMP LENGTH	116	SHORT		LONG
RUMP ANGLE	107	SLOPED		FLAT
STATURE	107	SHORT		TALL
FEET & LEGS	121	POOR		EXCELLENT
REAR LEG SET	92	STRAIGHT		SICKLE
FOOT ANGLE	111	LOW		STEEP
REAR LEGS REAR VIEW	102	HOCK-IN		PARALLEL
UDDER	140	POOR		EXCELLENT
FORE UDDER LENGTH	136	LOOSE		STRONG
REAR UDDER HEIGHT	122	LOW		HIGH
REAR UDDER WIDTH	101	NARROW		WIDE
UDDER DEPTH	123	DEEP		SHALLOW
UDDER BALANCE	122	MORE REAR		MORE FORE
UDDER CLEFT	115	WEAK		STRONG
FRONT TEAT PLACEMENT	127	WIDE		CLOSE
TEATS	110	POOR		EXCELLENT
TEAT LENGTH	110	LONG		SHORT
BEEF VALUE	97	POOR		EXCELLENT
BEEF ABILITIES for fattening bulls	-0,2	POOR		EXCELLENT

FUNCTIONAL

MTF | MIF | MTRF

TRAIT	SCORE	NON IMPROVER	IMPROVER
UDDER HEALTH	1,3		
FERTILITY	0,8		
PRODUCTIVE LIFE	2,3		

TRAIT	SCORE	SLOW	FAST
MILKING SPEED	115		
TEMPERAMENT	102	LIVELY	QUIET

TRAIT	SCORE	NORMAL	EASY CALVING
CALVING EASE	93		

with conventional semen 93
with sexed semen 95
Easy calving



ROOFTOP

RODELICE

OLBLACK | HELUX | TRIOMPHE - FR 0120008521 - aAa 516432



ISU
178

PRODUCTION

Dairy Synthesis +76

MILK	P kg	F kg	P%	F%	From'MIR	digeR
+1743	+62	+73	+0,11	+0,07	+0,1	+0,3

K-Cas BB B-Cas A2A2 Daughters 0 Rel. 70%

TYPE

Daughters 0 | Rel. 58 %

116

TRAIT	SCORE	POOR	GOOD	EXCELLENT
BODY CAPACITY	100	88	100	130
CHEST WIDTH	98	NARROW		WIDE
CHEST DEPTH	106	SHALLOW		DEEP
THURL WIDTH	101	NARROW		WIDE
RUMP LENGTH	98	SHORT		LONG
RUMP ANGLE	110	SLOPED		FLAT
STATURE	99	SHORT		TALL
FEET & LEGS	114	POOR		EXCELLENT
REAR LEG SET	93	STRAIGHT		SICKLE
FOOT ANGLE	96	LOW		STEEP
REAR LEGS REAR VIEW	116	HOCK-IN		PARALLEL
UDDER	119	POOR		EXCELLENT
FORE UDDER LENGTH	126	LOOSE		STRONG
REAR UDDER HEIGHT	107	LOW		HIGH
REAR UDDER WIDTH	119	NARROW		WIDE
UDDER DEPTH	104	DEEP		SHALLOW
UDDER BALANCE	115	MORE REAR		MORE FORE
UDDER CLEFT	101	WEAK		STRONG
FRONT TEAT PLACEMENT	124	WIDE		CLOSE
TEATS	112	POOR		EXCELLENT
TEAT LENGTH	113	LONG		SHORT
BEEF VALUE	100	POOR		EXCELLENT
BEEF ABILITIES for fattening bulls	1,5	POOR		EXCELLENT

FUNCTIONAL

MTF | MIF | MTRF

TRAIT	SCORE	NON IMPROVER	IMPROVER
UDDER HEALTH	0,5		
FERTILITY	0,3		
PRODUCTIVE LIFE	1,6		

TRAIT	SCORE	SLOW	FAST
MILKING SPEED	116		
TEMPERAMENT	98	LIVELY	QUIET

TRAIT	SCORE	NORMAL	EASY CALVING
CALVING EASE	95		

with conventional semen 95
with sexed semen 95
Easy calving



Lys (HELUX), RODELICE Dam



Marine (HITCHI), ROOFTOP Gran Dam

ROTTERDAM

OMER | MILTON | HARPER - FR 01540113204 - aAa 651423



ISU
180

PRODUCTION Dairy Synthesis +72

MILK	P kg	F kg	P%	F%	From'MIR	digeR
+1916	+59	+77	-0,05	+0,01	-0,4	+0,1

K-Cas AA B-Cas A1A1 Daughters 0 Rel. 70%

TYPE Daughters 0 | Rel. 60%

Attribute	Value	Quality	Scale
BODY CAPACITY	126	POOR	88-130
CHEST WIDTH	115	NARROW	WIDE
CHEST DEPTH	138	SHALLOW	DEEP
THURL WIDTH	115	NARROW	WIDE
RUMP LENGTH	135	SHORT	LONG
RUMP ANGLE	108	SLOPED	FLAT
STATURE	133	SHORT	TALL
FEET & LEGS	119	POOR	EXCELLENT
REAR LEG SET	91	STRAIGHT	SICKLE
FOOT ANGLE	109	LOW	STEEP
REAR LEGS REAR VIEW	127	HOCK-IN	PARALLEL
UDDER	122	POOR	EXCELLENT
FORE UDDER LENGTH	129	LOOSE	STRONG
REAR UDDER HEIGHT	116	LOW	HIGH
REAR UDDER WIDTH	114	NARROW	WIDE
UDDER DEPTH	115	DEEP	SHALLOW
UDDER BALANCE	155	MORE REAR	MORE FORE
UDDER CLEFT	103	WEAK	STRONG
FRONT TEAT PLACEMENT	97	WIDE	CLOSE
TEATS	103	POOR	EXCELLENT
TEAT LENGTH	107	LONG	SHORT
BEEF VALUE	95	POOR	EXCELLENT
BEEF ABILITIES for fattening bulls	-0,5	POOR	EXCELLENT

FUNCTIONAL

Attribute	Value	Scale
UDDER HEALTH	-0,2	NON IMPROVER
FERTILITY	1,5	NON IMPROVER
PRODUCTIVE LIFE	1,8	NON IMPROVER

Attribute	Value	Scale
MILKING SPEED	116	SLOW
TEMPERAMENT	98	LIVELY

Attribute	Value	Scale
CALVING EASE	95	with conventional semen
	95	with sexed semen

Easy calving



Origine (MILTON), ROTTERDAM Dam

RUSKY

OXYBUL | MILTON | GARGANO - FR 5632283437 - aAa



ISU
181

PRODUCTION Dairy Synthesis +65

MILK	P kg	F kg	P%	F%	From'MIR	digeR
+1258	+51	+61	+0,18	+0,19	+0,5	-0,2

K-Cas AB B-Cas A1A2 Daughters 0 Rel. 70%

TYPE Daughters 0 | Rel. 58%

Attribute	Value	Quality	Scale
BODY CAPACITY	112	POOR	88-130
CHEST WIDTH	106	NARROW	WIDE
CHEST DEPTH	115	SHALLOW	DEEP
THURL WIDTH	108	NARROW	WIDE
RUMP LENGTH	119	SHORT	LONG
RUMP ANGLE	116	SLOPED	FLAT
STATURE	123	SHORT	TALL
FEET & LEGS	117	POOR	EXCELLENT
REAR LEG SET	93	STRAIGHT	SICKLE
FOOT ANGLE	102	LOW	STEEP
REAR LEGS REAR VIEW	120	HOCK-IN	PARALLEL
UDDER	130	POOR	EXCELLENT
FORE UDDER LENGTH	118	LOOSE	STRONG
REAR UDDER HEIGHT	118	LOW	HIGH
REAR UDDER WIDTH	114	NARROW	WIDE
UDDER DEPTH	112	DEEP	SHALLOW
UDDER BALANCE	142	MORE REAR	MORE FORE
UDDER CLEFT	118	WEAK	STRONG
FRONT TEAT PLACEMENT	111	WIDE	CLOSE
TEATS	107	POOR	EXCELLENT
TEAT LENGTH	105	LONG	SHORT
BEEF VALUE	82	POOR	EXCELLENT
BEEF ABILITIES for fattening bulls	0,1	POOR	EXCELLENT

FUNCTIONAL

Attribute	Value	Scale
UDDER HEALTH	1,2	NON IMPROVER
FERTILITY	1,3	NON IMPROVER
PRODUCTIVE LIFE	2,2	NON IMPROVER

Attribute	Value	Scale
MILKING SPEED	114	SLOW
TEMPERAMENT	97	LIVELY

Attribute	Value	Scale
CALVING EASE	95	with conventional semen
	95	with sexed semen

Easy calving



Oleange (MILTON), RUSKY Dam

RUBIXCUBE

OZONE | LANCASTER | CARGO - FR 2525114378 - aAa 423561



ISU
170

PRODUCTION Dairy Synthesis +52

MILK	P kg	F kg	P%	F%	From'MIR	digeR
+1218	+44	+44	+0,06	-0,08	-0,8	-1

K-Cas AA B-Cas A1A1 Daughters 0 Rel. 70%

TYPE Daughters 0 | Rel. 57%

Attribute	Value	Quality	Scale
BODY CAPACITY	118	POOR	88-130
CHEST WIDTH	108	NARROW	WIDE
CHEST DEPTH	117	SHALLOW	DEEP
THURL WIDTH	121	NARROW	WIDE
RUMP LENGTH	125	SHORT	LONG
RUMP ANGLE	85	SLOPED	FLAT
STATURE	112	SHORT	TALL
FEET & LEGS	116	POOR	EXCELLENT
REAR LEG SET	94	STRAIGHT	SICKLE
FOOT ANGLE	89	LOW	STEEP
REAR LEGS REAR VIEW	107	HOCK-IN	PARALLEL
UDDER	145	POOR	EXCELLENT
FORE UDDER LENGTH	121	LOOSE	STRONG
REAR UDDER HEIGHT	129	LOW	HIGH
REAR UDDER WIDTH	122	NARROW	WIDE
UDDER DEPTH	127	DEEP	SHALLOW
UDDER BALANCE	114	MORE REAR	MORE FORE
UDDER CLEFT	123	WEAK	STRONG
FRONT TEAT PLACEMENT	109	WIDE	CLOSE
TEATS	112	POOR	EXCELLENT
TEAT LENGTH	118	LONG	SHORT
BEEF VALUE	96	POOR	EXCELLENT
BEEF ABILITIES for fattening bulls	0,2	POOR	EXCELLENT

FUNCTIONAL

Attribute	Value	Scale
UDDER HEALTH	0,6	NON IMPROVER
FERTILITY	0,4	NON IMPROVER
PRODUCTIVE LIFE	2,1	NON IMPROVER

Attribute	Value	Scale
MILKING SPEED	98	SLOW
TEMPERAMENT	117	LIVELY

Attribute	Value	Scale
CALVING EASE	95	with conventional semen
	95	with sexed semen

Easy calving



Odylle (LANCASTER), RUBIXCUBE Dam, 2nd lactation

RUSTIC

OGIVE | MILLENIUM | CRASAT - FR 7402897612 - aAa 561432



ISU
175

PRODUCTION Dairy Synthesis +53

MILK	P kg	F kg	P%	F%	From'MIR	digeR
+1027	+42	+51	+0,13	+0,13	-0,2	+0,5

K-Cas AB B-Cas A1A2 Daughters 0 Rel. 70%

TYPE Daughters 0 | Rel. 58%

Attribute	Value	Quality	Scale
BODY CAPACITY	99	POOR	88-130
CHEST WIDTH	110	NARROW	WIDE
CHEST DEPTH	96	SHALLOW	DEEP
THURL WIDTH	89	NARROW	WIDE
RUMP LENGTH	97	SHORT	LONG
RUMP ANGLE	103	SLOPED	FLAT
STATURE	110	SHORT	TALL
FEET & LEGS	109	POOR	EXCELLENT
REAR LEG SET	103	STRAIGHT	SICKLE
FOOT ANGLE	109	LOW	STEEP
REAR LEGS REAR VIEW	116	HOCK-IN	PARALLEL
UDDER	139	POOR	EXCELLENT
FORE UDDER LENGTH	132	LOOSE	STRONG
REAR UDDER HEIGHT	120	LOW	HIGH
REAR UDDER WIDTH	120	NARROW	WIDE
UDDER DEPTH	116	DEEP	SHALLOW
UDDER BALANCE	156	MORE REAR	MORE FORE
UDDER CLEFT	115	WEAK	STRONG
FRONT TEAT PLACEMENT	135	WIDE	CLOSE
TEATS	107	POOR	EXCELLENT
TEAT LENGTH	97	LONG	SHORT
BEEF VALUE	106	POOR	EXCELLENT
BEEF ABILITIES for fattening bulls	0,4	POOR	EXCELLENT

FUNCTIONAL

Attribute	Value	Scale
UDDER HEALTH	1,6	NON IMPROVER
FERTILITY	0,3	NON IMPROVER
PRODUCTIVE LIFE	2,2	NON IMPROVER

Attribute	Value	Scale
MILKING SPEED	97	SLOW
TEMPERAMENT	116	LIVELY

Attribute	Value	Scale
CALVING EASE	95	with conventional semen
	95	with sexed semen

Easy calving



Omeliq (MILLENIUM), RUSTIC Aunt



4, rue des Epicéas - 25 640 Roulans - France
Tél. +33 381 63 28 27- Fax +33 381 63 23 23
export@coopex.com



www.coopex.com



NOELCERNEU daughter

FOLLOW US ON  facebook

UT PYA COMMUNICATION